

# **\$1,575,000 - 4 52001 Rge Rd 275, Rural Parkland County**

MLS® #E4412545

**\$1,575,000**

6 Bedroom, 5.00 Bathroom, 3,793 sqft

Rural on 1.06 Acres

Lily Lake Estates (Parkland), Rural Parkland County, AB

WOW! 'LIVE YOUR DREAM' \*

CUSTOM-BUILT 6 BED/3.5 BATH

EXECUTIVE WALK OUT ON 1.06 ACRES \*

OVER 4500 SQFT LIVING SPACE \* BACKS

ONTO LILY LAKE \* TRIPLE ATTACHED +

TRIPLE DOOR 62'x32' DETACHED

GARAGE/SHOP w/ 2 BDRM 4PC BATH \* ALL

NEW STAMPED CONCRETE

DECKS/AGGRAGATE PATIO \*

GLASS/METAL RAILINGS \* GAZEBO

\*18â€™™ Ceilings in GRAND ENTRY & GREAT

RM \* CURVED OPEN STAIRCASES \*

MARBLE & HARDWOOD FLOORS \*CHEF'S

KITCHEN ((\* FOIL-WRAPPED & CHERRY

CABINETRY \* GRANITE COUNTERS

\*GLASS TILE BACKSPLASH \* S/S

APPLIANCES \* DOUBLE WIDE

FRIDGE/UPRIGHT FREEZER \* 5-BURNER

GAS COOK TOP \* WALL OVENS X 2 \*

WARMING DRAWER \* MICROWAVE \*

DISHWASHER \* TRASH COMPACTOR \*

WINE COOLER \* PANTRY FRIDGE)) \*

STONE F/P \* FORMAL DINING/FLEX ROOM

+ INFORMAL FAMILY DINING RM \* HOME

OFFICE \* FAMILY RM \*BONUS RM \* GAMES

RM \* CATWALK ACCESS TO PRIMARY

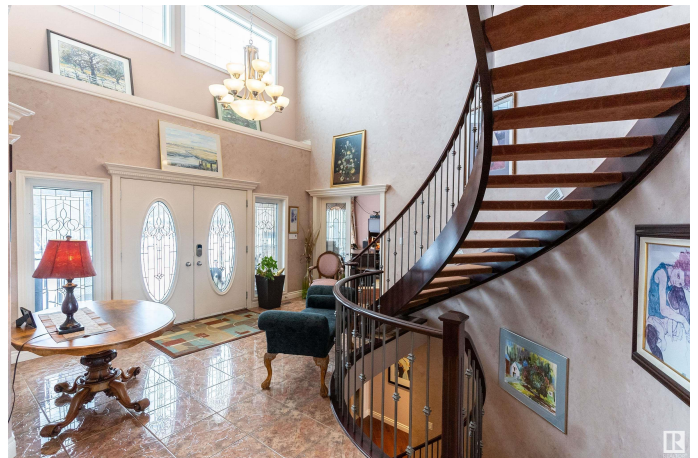
SUITE \* SPA ENSUITE w/STEAM SHOWER \*

PRIVATE BALCONY \* LAUNDRY CHUTES \*

SKYLIGHTS \* 9 min to Spruce Grove / Stony

Plain. 20min to Anthony Henday. Now what on

earth could be holding you back???



Built in 2001

## Essential Information

MLS® #	E4412545
Price	\$1,575,000
Bedrooms	6
Bathrooms	5.00
Full Baths	3
Half Baths	4
Square Footage	3,793
Acres	1.06
Year Built	2001
Type	Rural
Sub-Type	Detached Single Family
Style	2 Storey
Status	Active

## Community Information

Address	4 52001 Rge Rd 275
Area	Rural Parkland County
Subdivision	Lily Lake Estates (Parkland)
City	Rural Parkland County
County	ALBERTA
Province	AB
Postal Code	T7X 3V2

## Amenities

Features	Deck, Detectors Smoke, Fire Pit, Gazebo, Guest Suite, Parking-Extra, R.V. Storage, Workshop
----------	---

## Interior

Interior Features	ensuite bathroom
Heating	Forced Air-1, In Floor Heat System, Natural Gas
Fireplace	Yes
Stories	3
Has Basement	Yes
Basement	Full, Finished

## Exterior

Exterior	Wood
Exterior Features	Fruit Trees/Shrubs, Golf Nearby, Lake Access Property, Lake View, Landscaped
Construction	Wood
Foundation	Concrete Perimeter

**Additional Information**

Date Listed	October 31st, 2024
Days on Market	278
Zoning	Zone 90

DATA IS DEEMED RELIABLE BUT IS NOT GUARANTEED ACCURATE BY THE REALTORS® ASSOCIATION OF EDMONTON. COPYRIGHT 2025 BY THE REALTORS® ASSOCIATION OF EDMONTON. ALL RIGHTS RESERVED.Trademarks are owned or controlled by the Canadian Real Estate Association (CREA) and identify real estate professionals who are members of CREA (REALTOR®, REALTORS®) and/or the quality of services they provide (MLS®, Multiple Listing Service®)

Listing information last updated on August 5th, 2025 at 4:03pm MDT