

\$199,900 - 805 10388 105 Street, Edmonton

MLS® #E4417478

\$199,900

1 Bedroom, 1.00 Bathroom, 603 sqft

Condo / Townhouse on 0.00 Acres

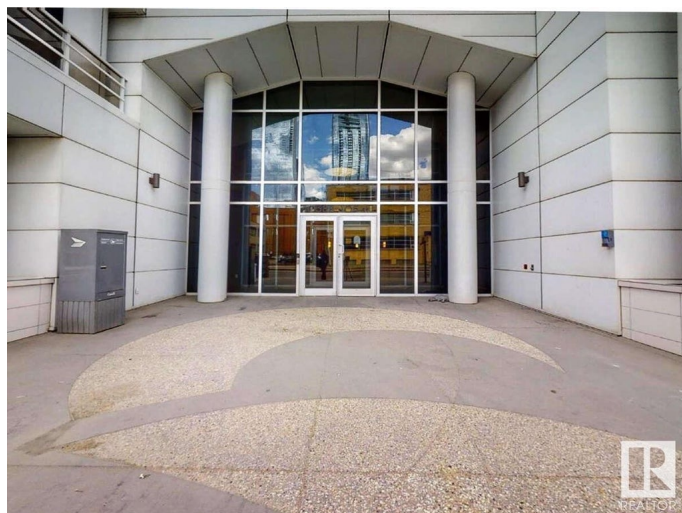
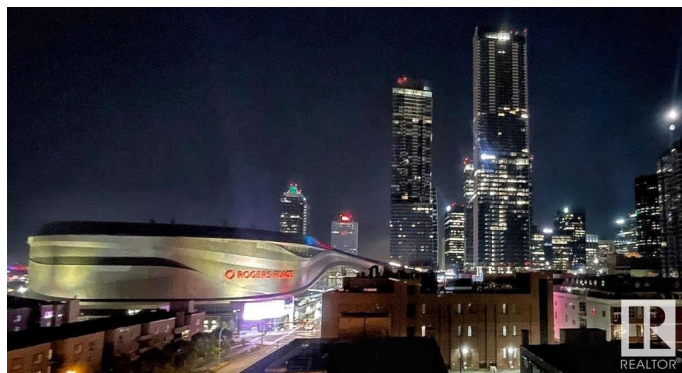
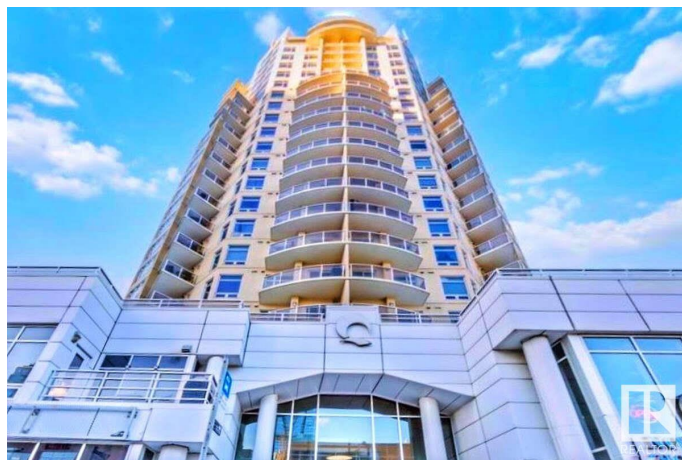
Downtown (Edmonton), Edmonton, AB

For more information, please click on "View Listing on Realtor Website". LUXURY and IMMACULATE 1-BD Condo near Ice District with incredible views of vibrant downtown skyline. Next to Rogers Arena and MacEwan U. Sleek modern design, open-concept living room offers flexible furnishing arrangements. Quartz and Granite countertops throughout. Kitchen equipped with glasstop stove, SS appliances including a compact dishwasher and full-size 36" refrigerator. Steps to MacEwan LRT, grocery stores, trendy Ice District restaurants & City Center shopping. Bedroom nestled in NE facing corner with incredible view of Rogers Arena. 3-Piece Bathroom with large soaker tub. In-suite washer/dryer. Includes secure and heated underground parking stall. Balcony equipped with BBQ gas line. In-suite washer/dryer. Building offers security features, party room w/ kitchen, water included and free visitor parking.

Built in 2010

Essential Information

MLS® #	E4417478
Price	\$199,900
Bedrooms	1
Bathrooms	1.00



Full Baths	1
Square Footage	603
Acres	0.00
Year Built	2010
Type	Condo / Townhouse
Sub-Type	Apartment High Rise
Style	Single Level Apartment
Status	Active

Community Information

Address	805 10388 105 Street
Area	Edmonton
Subdivision	Downtown (Edmonton)
City	Edmonton
County	ALBERTA
Province	AB
Postal Code	T5J 0C2

Amenities

Amenities	Ceiling 9 ft., Parking-Plug-Ins, Parking-Visitor, Party Room, Secured Parking, Security Door, Sprinkler System-Fire
Parking Spaces	1
Parking	Parkade, Stall

Interior

Appliances	Dishwasher-Built-In, Microwave Hood Fan, Refrigerator, Stacked Washer/Dryer, Stove-Countertop Electric
Heating	Heat Pump, Electric
# of Stories	22
Stories	1
Has Basement	Yes
Basement	None, No Basement

Exterior

Exterior	Concrete
Exterior Features	Public Transportation, Schools, View City, View Downtown
Roof	Tar & Gravel
Construction	Concrete
Foundation	Concrete Perimeter

Additional Information

Date Listed	January 9th, 2025
Days on Market	115
Zoning	Zone 12
Condo Fee	\$406

DATA IS DEEMED RELIABLE BUT IS NOT GUARANTEED ACCURATE BY THE REALTORS® ASSOCIATION OF EDMONTON. COPYRIGHT 2025 BY THE REALTORS® ASSOCIATION OF EDMONTON. ALL RIGHTS RESERVED.Trademarks are owned or controlled by the Canadian Real Estate Association (CREA) and identify real estate professionals who are members of CREA (REALTOR®, REALTORS®) and/or the quality of services they provide (MLS®, Multiple Listing Service®)

Listing information last updated on May 3rd, 2025 at 9:31pm MDT