

# **\$538,900 - 506 10728 82 Avenue, Edmonton**

MLS® #E4425730

**\$538,900**

2 Bedroom, 2.50 Bathroom, 1,805 sqft

Condo / Townhouse on 0.00 Acres

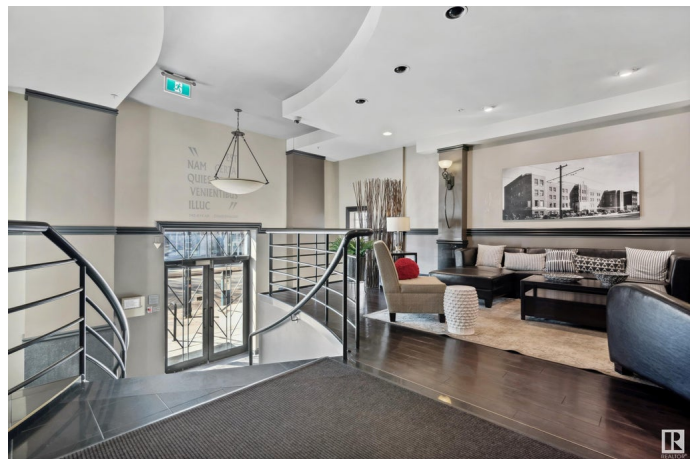
Garneau, Edmonton, AB

Stunning Executive PENTHOUSE Multi-level Apartment. 1,800+sq.ft. 3 Storey in the Heart of Old Strathcona. \*Bright & Spacious Contemporary Floor Plan with Exposed Brick & Architectural Beam Ceiling/Details. Recent Decor Consultant & Professionally Painted Throughout. \*Embrace the Sought After Lifestyle, in the Prestigious Garneau on Whyte Ave - Surrounded by Trendy Shops, Cafe's & Pubs. A GRAND & Exceptionally Unique Floor Plan - PERFECT for a Professional. Laminate Hardwood Flooring, Granite Countertops, (2) Gas Fireplaces & a Statement Spiral Staircase, Connecting all 3 Floors. Spacious Chef's Kitchen w/Secondary Spice Kitchen. \*In Suite Laundry, Large Jacuzzi Soaker Tub, Extra In Suite Storage, & 2 Oversized Private Balconies. \*Extraordinary Location - Fabulous View of Downtown Edmonton Skyline. Minutes from University & UofA Hospital, River Valley, Golf & Community Amenities. (2) Titled Underground Parking Stalls - Enjoy.

Built in 1948

## **Essential Information**

MLS® #	E4425730
Price	\$538,900
Bedrooms	2
Bathrooms	2.50



Full Baths	2
Half Baths	1
Square Footage	1,805
Acres	0.00
Year Built	1948
Type	Condo / Townhouse
Sub-Type	Lowrise Apartment
Style	Penthouse
Status	Active

### Community Information

Address	506 10728 82 Avenue
Area	Edmonton
Subdivision	Garneau
City	Edmonton
County	ALBERTA
Province	AB
Postal Code	T6E 6P5

### Amenities

Amenities	Ceiling 10 ft., Detectors Smoke, No Animal Home, No Smoking Home, Secured Parking, Security Door, Skylight, Sprinkler System-Fire, Storage-In-Suite
Parking Spaces	2
Parking	Heated, Underground

### Interior

Interior Features	ensuite bathroom
Appliances	Dishwasher-Built-In, Dryer, Fan-Ceiling, Garage Control, Hood Fan, Oven-Built-In, Refrigerator, Stove-Countertop Electric, Washer, Window Coverings
Heating	Forced Air-1, Natural Gas
Fireplace	Yes
Fireplaces	Double Sided, Marble Surround
# of Stories	5
Stories	3
Has Basement	Yes
Basement	None, No Basement

### Exterior

Exterior	Brick
Exterior Features	Back Lane, Golf Nearby, Low Maintenance Landscape, Playground Nearby, River Valley View, Shopping Nearby, View City, View Downtown
Roof	Unknown
Construction	Brick
Foundation	Concrete Perimeter

**Additional Information**

Date Listed	March 14th, 2025
Days on Market	56
Zoning	Zone 15
Condo Fee	\$890

DATA IS DEEMED RELIABLE BUT IS NOT GUARANTEED ACCURATE BY THE REALTORS® ASSOCIATION OF EDMONTON. COPYRIGHT 2025 BY THE REALTORS® ASSOCIATION OF EDMONTON. ALL RIGHTS RESERVED.Trademarks are owned or controlled by the Canadian Real Estate Association (CREA) and identify real estate professionals who are members of CREA (REALTOR®, REALTORS®) and/or the quality of services they provide (MLS®, Multiple Listing Service®)

Listing information last updated on May 9th, 2025 at 9:17pm MDT