

\$210,000 - 115 592 Hooke Road, Edmonton

MLS® #E4426832

\$210,000

1 Bedroom, 1.00 Bathroom, 1,146 sqft

Condo / Townhouse on 0.00 Acres

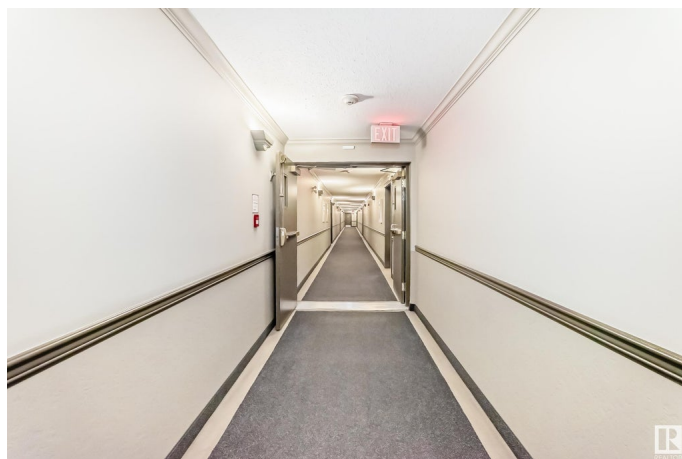
Canon Ridge, Edmonton, AB

Extremely clean & well kept home with one bedroom plus den. Gigantic open kitchen, dining room and living room! Quite spacious primary bedroom with tons of closet space. Huge den which is decorated as a guest bedroom but offers a lot of space for any purpose. Stunning view of the ravine offering beauty and privacy. Kitchen has top line appliances and a large peninsula island/eating bar. Big and private balcony that leads to trails through the ravine and all the way to Hermitage Park and beyond. Included are two SIDE BY SIDE parking stalls with storage cages, titled. Condo fees include almost everything! Common Party Room has many features including large screen TV, washroom, games, kitchen and outdoor patio with BBQ backing onto ravine. Excellent building!

Built in 2003

Essential Information

MLS® #	E4426832
Price	\$210,000
Bedrooms	1
Bathrooms	1.00
Full Baths	1
Square Footage	1,146
Acres	0.00
Year Built	2003



Type	Condo / Townhouse
Sub-Type	Lowrise Apartment
Style	Single Level Apartment
Status	Active

Community Information

Address	115 592 Hooke Road
Area	Edmonton
Subdivision	Canon Ridge
City	Edmonton
County	ALBERTA
Province	AB
Postal Code	T5A 5H2

Amenities

Amenities	Closet Organizers, Parking-Visitor, Party Room, See Remarks
Parking Spaces	2
Parking	Underground, See Remarks

Interior

Appliances	Dishwasher-Built-In, Dryer, Fan-Ceiling, Hood Fan, Refrigerator, Stove-Electric, Washer, Window Coverings
Heating	Hot Water, Natural Gas
# of Stories	4
Stories	1
Has Basement	Yes
Basement	None, No Basement

Exterior

Exterior	Wood, Vinyl
Exterior Features	Backs Onto Park/Trees, Public Transportation, Shopping Nearby
Roof	Asphalt Shingles
Construction	Wood, Vinyl
Foundation	Concrete Perimeter

Additional Information

Date Listed	March 21st, 2025
Days on Market	44
Zoning	Zone 35

Condo Fee \$711

DATA IS DEEMED RELIABLE BUT IS NOT GUARANTEED ACCURATE BY THE REALTORS® ASSOCIATION OF EDMONTON. COPYRIGHT 2025 BY THE REALTORS® ASSOCIATION OF EDMONTON. ALL RIGHTS RESERVED.Trademarks are owned or controlled by the Canadian Real Estate Association (CREA) and identify real estate professionals who are members of CREA (REALTOR®, REALTORS®) and/or the quality of services they provide (MLS®, Multiple Listing Service®)

Listing information last updated on May 3rd, 2025 at 10:32pm MDT