

\$500,000 - 14303 101 Avenue, Edmonton

MLS® #E4427437

\$500,000

0 Bedroom, 0.00 Bathroom,
Single Family on 0.00 Acres

Grovenor, Edmonton, AB

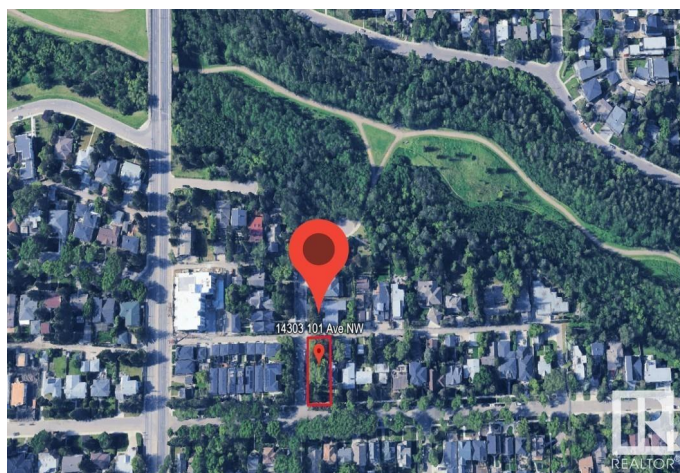
Turnkey Build Ready Tri-Plex with 2 Legal Basement Suites on a Corner Lot in Prestigious Grovenor just Steps to MacKinnon Ravine & MacKinnon Ravine Park. Many options are available. This property is permit ready and all plans are included in purchase price or just buy this Dream Lot. Develop the Suited Tri-Plex yourself, or the builder will complete it for you, or Design your Own Custom Home and the builder will develop it with you. The neighborhood is surrounded with newer Executive Homes and more Quality Developments Underway.

Essential Information

MLS® #	E4427437
Price	\$500,000
Bathrooms	0.00
Acres	0.00
Type	Single Family
Sub-Type	Vacant Lot/Land
Status	Active

Community Information

Address	14303 101 Avenue
Area	Edmonton
Subdivision	Grovenor
City	Edmonton



County	ALBERTA
Province	AB
Postal Code	T5N 0K7

Amenities

Parking	Parking Pad Cement/Paved, Stall, See Remarks
---------	--

Interior

Heating	Natural Gas
---------	-------------

Exterior

Exterior Features	Corner Lot, Level Land, Park/Reserve, Picnic Area, Public Swimming Pool, Public Transportation, Schools, Shopping Nearby
-------------------	--

Additional Information

Date Listed	March 25th, 2025
-------------	------------------

Days on Market	43
----------------	----

Zoning	Zone 21
--------	---------

DATA IS DEEMED RELIABLE BUT IS NOT GUARANTEED ACCURATE BY THE REALTORS® ASSOCIATION OF EDMONTON. COPYRIGHT 2025 BY THE REALTORS® ASSOCIATION OF EDMONTON. ALL RIGHTS RESERVED. Trademarks are owned or controlled by the Canadian Real Estate Association (CREA) and identify real estate professionals who are members of CREA (REALTOR®, REALTORS®) and/or the quality of services they provide (MLS®, Multiple Listing Service®)

Listing information last updated on May 7th, 2025 at 12:03am MDT