

\$549,000 - 9444 211 Street, Edmonton

MLS® #E4431905

\$549,000

3 Bedroom, 2.50 Bathroom, 1,728 sqft

Single Family on 0.00 Acres

Webber Greens, Edmonton, AB

Welcome to this beautifully upgraded single-family home in the sought-after community of Webber Greens, offering 1,727 sq ft of well-planned living space. The main floor features a modern kitchen with upgraded stainless steel appliances, a spacious dining area and bright living room. Upstairs features a spacious primary suite with walk-in closet and ensuite. Two additional bedrooms and another full bathroom complete the upper level. Enjoy 9-foot ceilings on all three levels including the basement, stylish rounded corners for an added touch of elegance and luxury vinyl plank flooring throughout the main and upper floor. A separate side entrance to the basement offers great potential for future development. Step outside to a double detached garage and a generously sized fully fenced backyard perfect for outdoor gatherings, kids'™ play, or simply relaxing. Situated right across from Jr. High school and just a 5-minute drive to West Edmonton Mall this home is the ideal fit for a growing family.

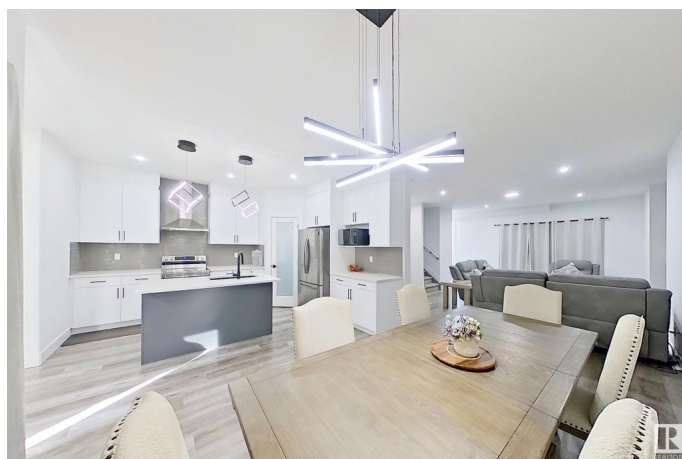
Built in 2023

Essential Information

MLS® # E4431905

Price \$549,000

Bedrooms 3



Bathrooms	2.50
Full Baths	2
Half Baths	1
Square Footage	1,728
Acres	0.00
Year Built	2023
Type	Single Family
Sub-Type	Detached Single Family
Style	2 Storey
Status	Active

Community Information

Address	9444 211 Street
Area	Edmonton
Subdivision	Webber Greens
City	Edmonton
County	ALBERTA
Province	AB
Postal Code	T5T 4R1

Amenities

Amenities	Ceiling 9 ft., Deck, No Animal Home, No Smoking Home, Security Door, 9 ft. Basement Ceiling
Parking	Double Garage Detached

Interior

Interior Features	ensuite bathroom
Appliances	Dishwasher-Built-In, Dryer, Garage Opener, Hood Fan, Refrigerator, Stove-Electric, Washer, Window Coverings, See Remarks
Heating	Forced Air-1, Natural Gas
Stories	2
Has Basement	Yes
Basement	Full, Unfinished

Exterior

Exterior	Wood, Asphalt
Exterior Features	Airport Nearby, Commercial, Fenced, Golf Nearby, Playground Nearby, Public Transportation, Schools, Shopping Nearby, See Remarks
Roof	Asphalt Shingles

Construction	Wood, Asphalt
Foundation	Concrete Perimeter

Additional Information

Date Listed	April 19th, 2025
Days on Market	14
Zoning	Zone 58

DATA IS DEEMED RELIABLE BUT IS NOT GUARANTEED ACCURATE BY THE REALTORS® ASSOCIATION OF EDMONTON. COPYRIGHT 2025 BY THE REALTORS® ASSOCIATION OF EDMONTON. ALL RIGHTS RESERVED.Trademarks are owned or controlled by the Canadian Real Estate Association (CREA) and identify real estate professionals who are members of CREA (REALTOR®, REALTORS®) and/or the quality of services they provide (MLS®, Multiple Listing Service®)

Listing information last updated on May 3rd, 2025 at 11:47am MDT