

\$580,000 - 1344 Potter Greens Drive, Edmonton

MLS® #E4432063

\$580,000

4 Bedroom, 3.00 Bathroom, 1,814 sqft

Condo / Townhouse on 0.00 Acres

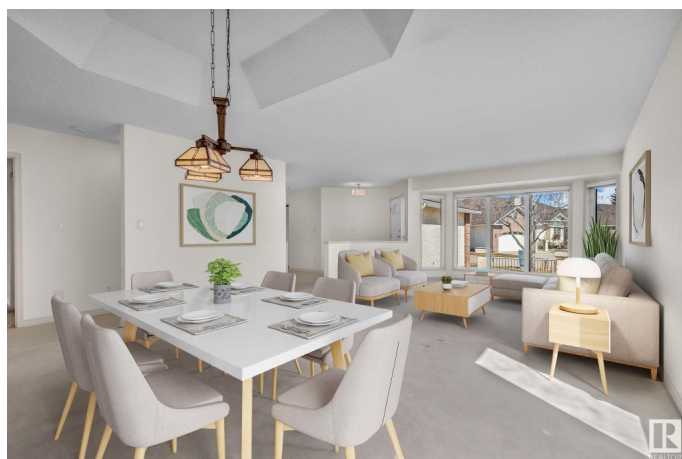
Potter Greens, Edmonton, AB

Adult living at its best! This stunning 1800+ sq ft bungalow backs onto Lewis Estates Golf Course and offers everything youâ€™ve been looking for. The open-concept main floor is filled with natural light and features two living rooms, a formal dining room, and a bright breakfast nook overlooking beautiful views. Relax and unwind on the large deck â€“ the perfect place for morning coffee or evening sunsets. The spacious primary suite offers a walk-in closet and ensuite, plus thereâ€™s a versatile second bedroom or den. The fully finished basement with 9 ft ceilings includes two additional bedrooms, a large rec room, and plenty of storage. Complete with a double attached garage, this home combines comfort, style, and unbeatable location! **This home has been virtually staged**

Built in 1992

Essential Information

| | |
|----------------|-----------|
| MLS® # | E4432063 |
| Price | \$580,000 |
| Bedrooms | 4 |
| Bathrooms | 3.00 |
| Full Baths | 3 |
| Square Footage | 1,814 |
| Acres | 0.00 |
| Year Built | 1992 |



| | |
|----------|-------------------|
| Type | Condo / Townhouse |
| Sub-Type | Half Duplex |
| Style | Bungalow |
| Status | Active |

Community Information

| | |
|-------------|--------------------------|
| Address | 1344 Potter Greens Drive |
| Area | Edmonton |
| Subdivision | Potter Greens |
| City | Edmonton |
| County | ALBERTA |
| Province | AB |
| Postal Code | T5T 6A3 |

Amenities

| | |
|----------------|------------------------------|
| Amenities | Deck, 9 ft. Basement Ceiling |
| Parking Spaces | 4 |
| Parking | Double Garage Attached |

Interior

| | |
|-------------------|--|
| Interior Features | ensuite bathroom |
| Appliances | Dishwasher-Built-In, Dryer, Freezer, Garage Control, Garage Opener, Microwave Hood Fan, Refrigerator, Stove-Electric, Washer, Window Coverings, See Remarks, Refrigerators-Two |
| Heating | Forced Air-1, Natural Gas |
| Fireplace | Yes |
| Fireplaces | Mantel |
| Stories | 2 |
| Has Basement | Yes |
| Basement | Full, Finished |

Exterior

| | |
|-------------------|--|
| Exterior | Wood, Brick, Vinyl |
| Exterior Features | Backs Onto Park/Trees, Golf Nearby, Landscaped, Playground Nearby, Shopping Nearby |
| Roof | Asphalt Shingles |
| Construction | Wood, Brick, Vinyl |
| Foundation | Concrete Perimeter |

Additional Information

| | |
|----------------|------------------|
| Date Listed | April 22nd, 2025 |
| Days on Market | 11 |
| Zoning | Zone 58 |
| Condo Fee | \$564 |

DATA IS DEEMED RELIABLE BUT IS NOT GUARANTEED ACCURATE BY THE REALTORS® ASSOCIATION OF EDMONTON. COPYRIGHT 2025 BY THE REALTORS® ASSOCIATION OF EDMONTON. ALL RIGHTS RESERVED. Trademarks are owned or controlled by the Canadian Real Estate Association (CREA) and identify real estate professionals who are members of CREA (REALTOR®, REALTORS®) and/or the quality of services they provide (MLS®, Multiple Listing Service®)

Listing information last updated on May 3rd, 2025 at 11:32am MDT