

# \$1,200,000 - 50097 Rr 244, Rural Leduc County

MLS® #E4432730

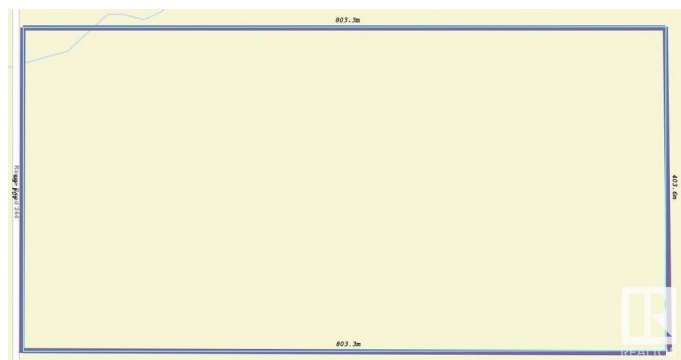
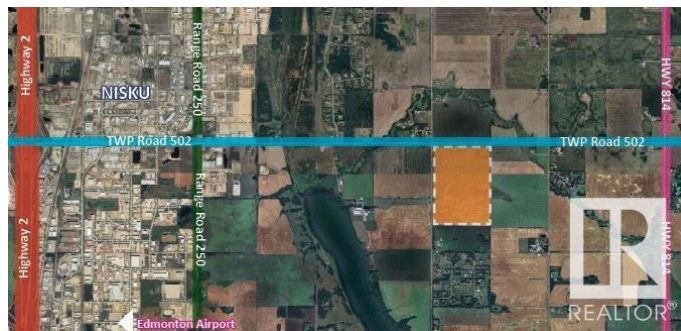
**\$1,200,000**

0 Bedroom, 0.00 Bathroom,

Rural on 79.83 Acres

None, Rural Leduc County, AB

Prime Land for Sale – Build or Invest This beautiful parcel is up for grabs – buy it on its own or combine it with the adjoining 1/4 section. Located just 2 km east of Nisku on Airport Road, it sits perfectly between Beaumont and Leduc. The land currently brings in \$80/acre in annual income and offers excellent development potential: build up to 4 houses. Hard-to-beat location with quick access to EIA, QE2, Leduc, Nisku, Beaumont, and South Edmonton.



## Essential Information

MLS® #	E4432730
Price	\$1,200,000
Bathrooms	0.00
Acres	79.83
Type	Rural
Sub-Type	Vacant Lot/Land
Status	Active

## Community Information

Address	50097 Rr 244
Area	Rural Leduc County
Subdivision	None
City	Rural Leduc County
County	ALBERTA
Province	AB

Postal Code            T4X 0N9

**Exterior**

Exterior Features    Airport Nearby, Golf Nearby, Playground Nearby, Schools, Shopping  
Nearby

**Additional Information**

Date Listed            April 25th, 2025

Days on Market       8

Zoning                 Zone 80

DATA IS DEEMED RELIABLE BUT IS NOT GUARANTEED ACCURATE BY THE REALTORS® ASSOCIATION OF EDMONTON. COPYRIGHT 2025 BY THE REALTORS® ASSOCIATION OF EDMONTON. ALL RIGHTS RESERVED.Trademarks are owned or controlled by the Canadian Real Estate Association (CREA) and identify real estate professionals who are members of CREA (REALTOR®, REALTORS®) and/or the quality of services they provide (MLS®, Multiple Listing Service®)

Listing information last updated on May 3rd, 2025 at 2:32pm MDT