

# **\$779,000 - 26 52411 Rge Road 214, Rural Strathcona County**

MLS® #E4433387

**\$779,000**

4 Bedroom, 3.00 Bathroom, 1,241 sqft

Rural on 3.23 Acres

Tanglewood, Rural Strathcona County, AB

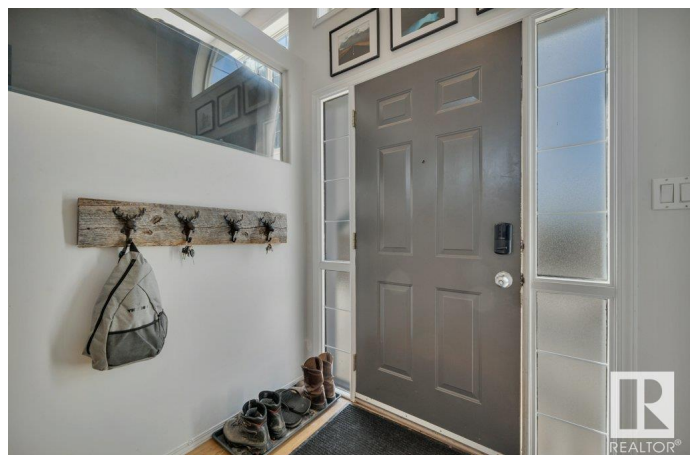
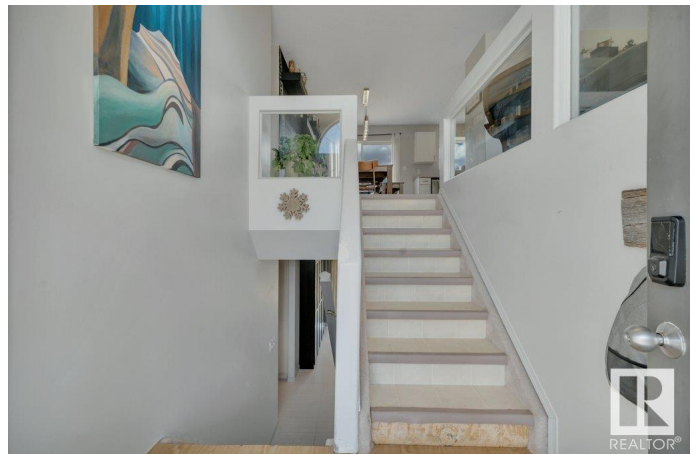
Acreage living at its finest, this walk-out bi-level on 3+ acres offers over 1240 sq ft of living space. Having city water eliminates the need for time consuming water hauling. This bright home features 3 bedrooms upstairs, including the primary bedroom with a 3 piece ensuite. The lower level has been extensively updated and has 9-foot ceilings, an additional bedroom, 3 piece bathroom and rec room. Updates include a newer roof, basement reno, in-floor heating and fencing. The property is beautifully landscaped with natural fresh water sources for a gardening area to grow your own produce and a pond for learning how to skate like the next big hockey star and enjoying wildlife. Experience the peace of acreage living with the security of being located within a subdivision. Located 10 minutes from Sherwood Park, it's close to the rapidly growing Ardrossan, spray parks, and a rec centre. Nearby schools provide great educational opportunities. A rare find offering tranquility and modern amenities.

Built in 1999

## **Essential Information**

MLS® # E4433387

Price \$779,000



Bedrooms	4
Bathrooms	3.00
Full Baths	3
Square Footage	1,241
Acres	3.23
Year Built	1999
Type	Rural
Sub-Type	Detached Single Family
Style	Bi-Level
Status	Active

### Community Information

Address	26 52411 Rge Road 214
Area	Rural Strathcona County
Subdivision	Tanglewood
City	Rural Strathcona County
County	ALBERTA
Province	AB
Postal Code	T8E 2G8

### Amenities

Features	Ceiling 9 ft., Closet Organizers, Detectors Smoke, Front Porch, Hot Water Natural Gas, No Animal Home, No Smoking Home, Patio, R.V. Storage, Walkout Basement, 9 ft. Basement Ceiling
----------	---

### Interior

Interior Features	ensuite bathroom
Heating	Forced Air-1, In Floor Heat System, Natural Gas
Fireplace	Yes
Stories	2
Has Basement	Yes
Basement	Full, Finished

### Exterior

Exterior	Wood
Exterior Features	Backs Onto Park/Trees, Fruit Trees/Shrubs, Golf Nearby, Landscaped, Rolling Land, Schools, Treed Lot, Vegetable Garden, See Remarks, Partially Fenced
Construction	Wood

Foundation                      Concrete Perimeter

**Additional Information**

Date Listed                      April 30th, 2025

Days on Market                48

Zoning                              Zone 80

DATA IS DEEMED RELIABLE BUT IS NOT GUARANTEED ACCURATE BY THE REALTORS® ASSOCIATION OF EDMONTON. COPYRIGHT 2025 BY THE REALTORS® ASSOCIATION OF EDMONTON. ALL RIGHTS RESERVED.Trademarks are owned or controlled by the Canadian Real Estate Association (CREA) and identify real estate professionals who are members of CREA (REALTOR®, REALTORS®) and/or the quality of services they provide (MLS®, Multiple Listing Service®)

Listing information last updated on June 17th, 2025 at 3:17am MDT