

\$389,900 - 27 Douglas Lane, Leduc

MLS® #E4433550

\$389,900

3 Bedroom, 3.00 Bathroom, 1,390 sqft

Single Family on 0.00 Acres

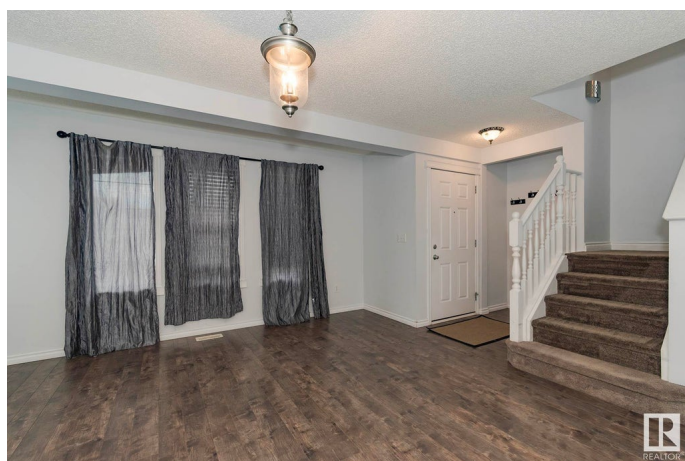
Tribute, Leduc, AB

Affordable & Fully Finished with Oversized Heated Garage! Tucked away in a quiet Leduc neighbourhood near parks and schools, this fully finished 3-bedroom home has a lot to offer and is a perfect choice for first-time home buyers. Enjoy a spacious main floor with a huge living room, sunny bay window dining area, and a massive kitchen featuring honey oak cabinetry, stainless steel appliances, and tons of storage. A convenient half bath completes the main level. Upstairs you'll find a large master suite with full ensuite, two more generous sized bedrooms, and another full bathroom. The fully finished basement includes a huge family room ideal for movie nights, a second half bath, laundry and loads of storage. Step outside to a large south-facing deck, private and perfect for sunny afternoons. Huge bonus is an oversized heated double garage with rear lane access! Great value in a great location.

Built in 2005

Essential Information

| | |
|------------|-----------|
| MLS® # | E4433550 |
| Price | \$389,900 |
| Bedrooms | 3 |
| Bathrooms | 3.00 |
| Full Baths | 2 |



| | |
|----------------|------------------------|
| Half Baths | 2 |
| Square Footage | 1,390 |
| Acres | 0.00 |
| Year Built | 2005 |
| Type | Single Family |
| Sub-Type | Detached Single Family |
| Style | 2 Storey |
| Status | Active |

Community Information

| | |
|-------------|-----------------|
| Address | 27 Douglas Lane |
| Area | Leduc |
| Subdivision | Tribute |
| City | Leduc |
| County | ALBERTA |
| Province | AB |
| Postal Code | T9E 8P5 |

Amenities

| | |
|-----------|------------------------|
| Amenities | Deck, Vinyl Windows |
| Parking | Double Garage Detached |

Interior

| | |
|-------------------|---|
| Interior Features | ensuite bathroom |
| Appliances | Dishwasher-Built-In, Dryer, Garage Control, Garage Opener, Microwave Hood Fan, Refrigerator, Stove-Electric, Washer, Window Coverings |
| Heating | Forced Air-1, Natural Gas |
| Stories | 3 |
| Has Basement | Yes |
| Basement | Full, Finished |

Exterior

| | |
|-------------------|--|
| Exterior | Wood, Vinyl |
| Exterior Features | Airport Nearby, Fenced, Playground Nearby, Public Swimming Pool, Public Transportation, Schools, Shopping Nearby |
| Roof | Asphalt Shingles |
| Construction | Wood, Vinyl |
| Foundation | Concrete Perimeter |

Additional Information

Date Listed May 1st, 2025

Days on Market 2

Zoning Zone 81

DATA IS DEEMED RELIABLE BUT IS NOT GUARANTEED ACCURATE BY THE REALTORS® ASSOCIATION OF EDMONTON. COPYRIGHT 2025 BY THE REALTORS® ASSOCIATION OF EDMONTON. ALL RIGHTS RESERVED. Trademarks are owned or controlled by the Canadian Real Estate Association (CREA) and identify real estate professionals who are members of CREA (REALTOR®, REALTORS®) and/or the quality of services they provide (MLS®, Multiple Listing Service®)

Listing information last updated on May 3rd, 2025 at 8:47am MDT