

\$649,999 - 13 52508 Rge Road 21, Rural Parkland County

MLS® #E4433650

\$649,999

5 Bedroom, 3.00 Bathroom, 1,581 sqft
Rural on 1.30 Acres

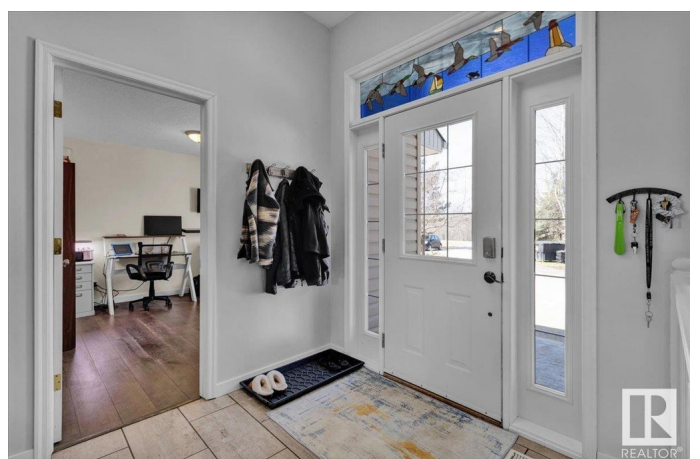
Heatherlea, Rural Parkland County, AB

This stunning 5-bedroom bungalow offers new shingles (2023), spacious and open-concept living with vaulted ceilings and hardwood flooring throughout the main floor. The bright kitchen features a large island with a breakfast bar, tile, stainless steel appliances, and flows seamlessly into the dining and living areas. The main floor includes a laundry room, 2 bedrooms, a 4pc bath, and a spacious primary suite with a walk-in closet and 4pc ensuite featuring a soaker tub and separate shower. The walkout basement is fully finished with a large rec room, 2 more bedrooms, and a 3pc bath. Enjoy the outdoors on a treed, private lot with a pond, large upper deck, walkout patio area, chicken coop and fenced dog run. A paved driveway leads to the double attached garage, making parking a breeze. Located only 15 minutes from Stony Plain, this home has it all!

Built in 2004

Essential Information

MLS® #	E4433650
Price	\$649,999
Bedrooms	5
Bathrooms	3.00



Full Baths	3
Square Footage	1,581
Acres	1.30
Year Built	2004
Type	Rural
Sub-Type	Detached Single Family
Style	Bungalow
Status	Active

Community Information

Address	13 52508 Rge Road 21
Area	Rural Parkland County
Subdivision	Heatherlea
City	Rural Parkland County
County	ALBERTA
Province	AB
Postal Code	T0E 0H0

Amenities

Features	Ceiling 9 ft., Closet Organizers, Deck, Detectors Smoke, Dog Run-Fenced In, Patio, R.V. Storage, Vaulted Ceiling, Walkout Basement
----------	--

Interior

Interior Features	ensuite bathroom
Heating	Forced Air-1, Natural Gas
Fireplace	Yes
Stories	2
Has Basement	Yes
Basement	Full, Finished

Exterior

Exterior	Wood
Exterior Features	Environmental Reserve, Fenced, Golf Nearby, Hillside, Landscaped, Park/Reserve, Playground Nearby, Private Setting, Schools, Treed Lot
Construction	Wood
Foundation	Preserved Wood

Additional Information

Date Listed	May 1st, 2025
-------------	---------------

Days on Market 27

Zoning Zone 90

DATA IS DEEMED RELIABLE BUT IS NOT GUARANTEED ACCURATE BY THE REALTORS® ASSOCIATION OF EDMONTON. COPYRIGHT 2025 BY THE REALTORS® ASSOCIATION OF EDMONTON. ALL RIGHTS RESERVED. Trademarks are owned or controlled by the Canadian Real Estate Association (CREA) and identify real estate professionals who are members of CREA (REALTOR®, REALTORS®) and/or the quality of services they provide (MLS®, Multiple Listing Service®)

Listing information last updated on May 28th, 2025 at 1:32pm MDT