

## \$29,900 - Hwy 44 Rr 264, Rural Westlock County

MLS® #E4433806

**\$29,900**

0 Bedroom, 0.00 Bathroom,  
Rural on 2.70 Acres

None, Rural Westlock County, AB

Located 4 kms south of Westlock Inn on Hwy 44 & RR 264 is this 2.70 acre parcel. Go south to RR 264. Turn onto it and you're basically there. Terrific place to display your wares or your business in Westlock. Zoned HC (Highway Commercial).

### Essential Information

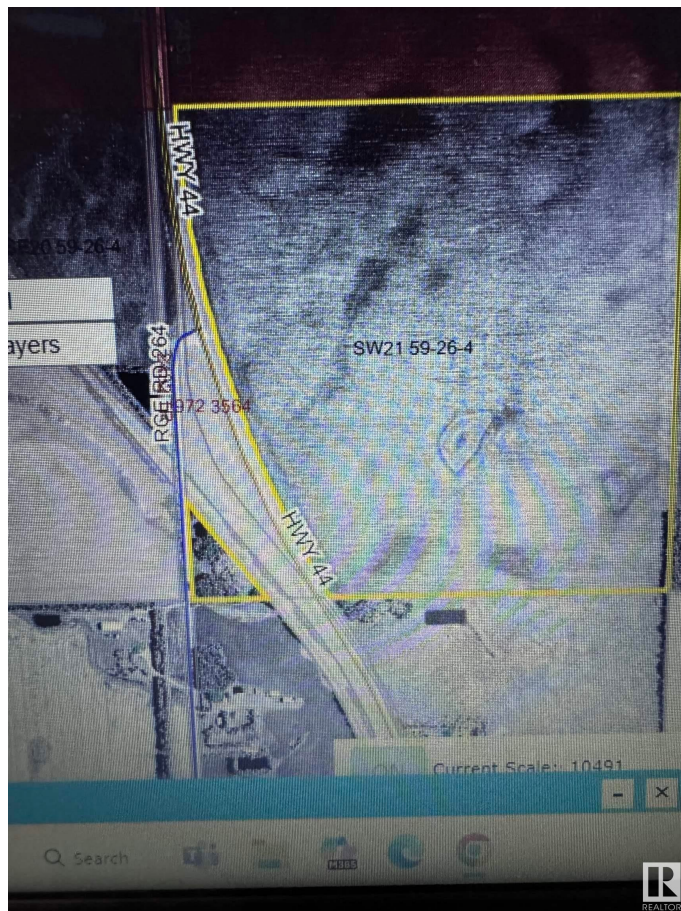
|           |                 |
|-----------|-----------------|
| MLS® #    | E4433806        |
| Price     | \$29,900        |
| Bathrooms | 0.00            |
| Acres     | 2.70            |
| Type      | Rural           |
| Sub-Type  | Vacant Lot/Land |
| Status    | Active          |

### Community Information

|             |                       |
|-------------|-----------------------|
| Address     | Hwy 44 Rr 264         |
| Area        | Rural Westlock County |
| Subdivision | None                  |
| City        | Rural Westlock County |
| County      | ALBERTA               |
| Province    | AB                    |
| Postal Code | T7P 2P6               |

### Exterior

Exterior Features Treed Lot, See Remarks



Additional Information

Date Listed            April 29th, 2025  
Days on Market        3  
Zoning                  Zone 70



DATA IS DEEMED RELIABLE BUT IS NOT GUARANTEED ACCURATE BY THE REALTORS® ASSOCIATION OF EDMONTON. COPYRIGHT 2025 BY THE REALTORS® ASSOCIATION OF EDMONTON. ALL RIGHTS RESERVED. Trademarks are owned or controlled by the Canadian Real Estate Association (CREA) and identify real estate professionals who are members of CREA (REALTOR®, REALTORS®) and/or the quality of services they provide (MLS®, Multiple Listing Service®)  
Listing information last updated on May 2nd, 2025 at 9:02pm MDT

