

\$74,000 - 17 - 59512 Rr 255, Rural Westlock County

MLS® #E4433879

\$74,000

0 Bedroom, 0.00 Bathroom,
Rural on 0.67 Acres

Crosswind Landing, Rural Westlock County,
AB

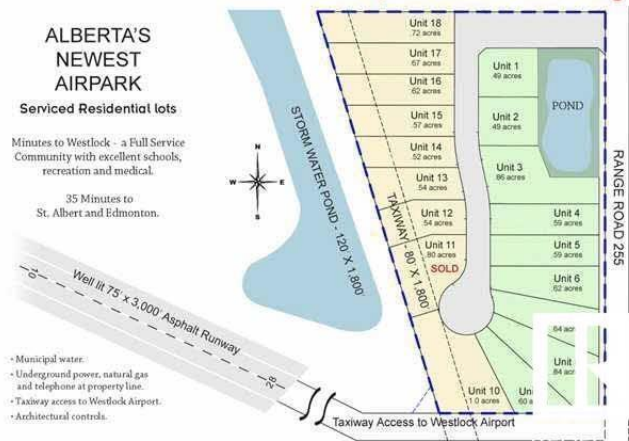
What a beautiful spot to build your dream home in Westlock County's upscale architecturally controlled sub-division from .14 acres to 1 acre in size that have municipal water, underground power, gas and telephone to each lot. These lots have aircraft access to Westlock Airport and it's an easy commute to Edmonton (35 minutes to St. Albert) or points north . Adjacent to Rainbow Park just 4 1/2 miles from town. Large ponds with wildlife (largest is 1800 ft long for kayak/canoeing), 1000 lovely, planted trees (2014) including Lilac, Golden Willow, Red Osier Dogwood & Laurel Leaf Willows surround the sub-division and embrace the entryway. Westlock is a full service community with modern hospital, public & private schools, shopping & recreational facilities, 18 hole golf and 15 minutes to Tawatinaw Ski hill with downhill, snowboard, tubing & cross-country skiing. Country living at it's finest. GST may apply.

Essential Information

| | |
|-----------|----------|
| MLS® # | E4433879 |
| Price | \$74,000 |
| Bathrooms | 0.00 |
| Acres | 0.67 |
| Type | Rural |



Westlock's Most Exclusive Upscale Community



| | |
|----------|-----------------|
| Sub-Type | Vacant Lot/Land |
| Status | Active |

Community Information

| | |
|-------------|-----------------------|
| Address | 17 - 59512 Rr 255 |
| Area | Rural Westlock County |
| Subdivision | Crosswind Landing |
| City | Rural Westlock County |
| County | ALBERTA |
| Province | AB |
| Postal Code | T7P 2P4 |

Exterior

| | |
|-------------------|---|
| Exterior Features | Airport Nearby, Golf Nearby, Level Land, Schools, Shopping Nearby, Ski Hill Nearby, Stream/Pond |
|-------------------|---|

Additional Information

| | |
|----------------|------------------|
| Date Listed | April 29th, 2025 |
| Days on Market | 99 |
| Zoning | Zone 70 |

DATA IS DEEMED RELIABLE BUT IS NOT GUARANTEED ACCURATE BY THE REALTORS® ASSOCIATION OF EDMONTON. COPYRIGHT 2025 BY THE REALTORS® ASSOCIATION OF EDMONTON. ALL RIGHTS RESERVED. Trademarks are owned or controlled by the Canadian Real Estate Association (CREA) and identify real estate professionals who are members of CREA (REALTOR®, REALTORS®) and/or the quality of services they provide (MLS®, Multiple Listing Service®)

Listing information last updated on August 6th, 2025 at 9:03am MDT