

\$535,000 - 118 Ridgpoint Way, Sherwood Park

MLS® #E4434071

\$535,000

3 Bedroom, 3.00 Bathroom, 1,539 sqft

Single Family on 0.00 Acres

The Ridge (Sherwood Park), Sherwood Park, AB

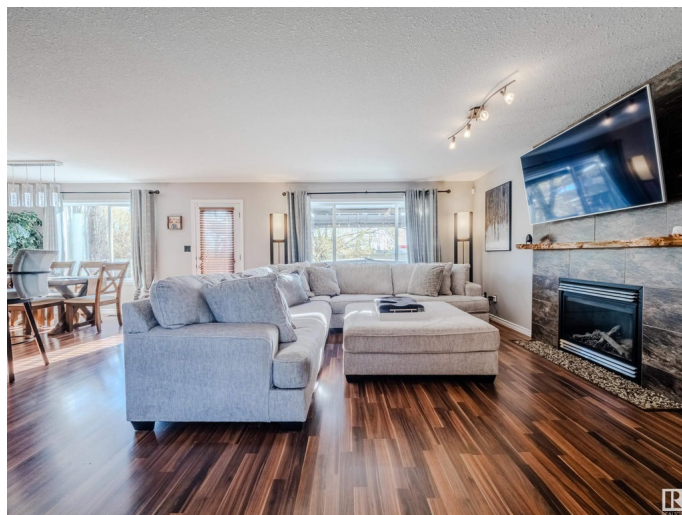
Welcome to this beautifully maintained 1600 sqft two-storey home located in the desirable community of The Ridge. Offering 3 spacious bedrooms, 2 full bathrooms, and 2 half bathrooms, this home is perfect for families of all sizes. The open concept main floor features a bright kitchen with STAINLESS STEEL APPLIANCES, a convenient eat-up island, and a seamless flow into the cozy living room complete with a GAS FIREPLACE—ideal for entertaining or relaxing. Enjoy the practicality of a main floor laundry area, mudroom, and pantry. Upstairs you'll find 3 generous bedrooms including a primary suite with ensuite bath. The fully finished basement provides additional living space for a rec room, office, or home gym. Step outside to a huge backyard featuring a stunning deck, perfect for summer barbecues, and a MASSIVE SHED for all your storage needs. Located 5 mins from the new K-12 French Immersion school, with quick access to Wye Road and Hwy 21, this home offers comfort, convenience, and community. A must-see!

Built in 2001

Essential Information

MLS® # E4434071

Price \$535,000



Bedrooms	3
Bathrooms	3.00
Full Baths	2
Half Baths	2
Square Footage	1,539
Acres	0.00
Year Built	2001
Type	Single Family
Sub-Type	Detached Single Family
Style	2 Storey
Status	Active

Community Information

Address	118 Ridgepoint Way
Area	Sherwood Park
Subdivision	The Ridge (Sherwood Park)
City	Sherwood Park
County	ALBERTA
Province	AB
Postal Code	T8A 6B3

Amenities

Amenities	Air Conditioner, Deck, Gazebo, No Smoking Home
Parking	Double Garage Attached

Interior

Interior Features	ensuite bathroom
Appliances	Air Conditioning-Central, Dishwasher-Built-In, Dryer, Microwave Hood Fan, Refrigerator, Storage Shed, Stove-Electric, Washer, Window Coverings
Heating	Forced Air-1, Natural Gas
Fireplace	Yes
Fireplaces	Tile Surround
Stories	3
Has Basement	Yes
Basement	Full, Finished

Exterior

Exterior	Wood, Vinyl
----------	-------------

Exterior Features	Fenced, Flat Site, Landscaped, Low Maintenance Landscape, Picnic Area, Playground Nearby, Public Transportation, Schools
Roof	Asphalt Shingles
Construction	Wood, Vinyl
Foundation	Concrete Perimeter

School Information

Elementary	Brentwood Elementary
Middle	FR Haythorne
High	Bev Facey

Additional Information

Date Listed	May 2nd, 2025
Days on Market	1
Zoning	Zone 25

DATA IS DEEMED RELIABLE BUT IS NOT GUARANTEED ACCURATE BY THE REALTORS® ASSOCIATION OF EDMONTON. COPYRIGHT 2025 BY THE REALTORS® ASSOCIATION OF EDMONTON. ALL RIGHTS RESERVED. Trademarks are owned or controlled by the Canadian Real Estate Association (CREA) and identify real estate professionals who are members of CREA (REALTOR®, REALTORS®) and/or the quality of services they provide (MLS®, Multiple Listing Service®)

Listing information last updated on May 3rd, 2025 at 8:47pm MDT