

\$535,000 - 100 Napoleon Crescent, St. Albert

MLS® #E4434143

\$535,000

4 Bedroom, 3.00 Bathroom, 1,298 sqft

Single Family on 0.00 Acres

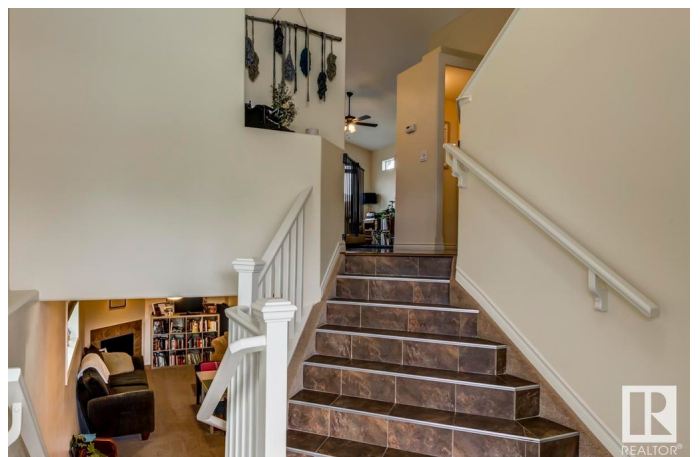
North Ridge, St. Albert, AB

Welcome to this beautiful bi-level situated ideally in the family community of North Ridge. Very inviting open floor plan showcasing maple hardwood flooring and ceramic tile. Big bright windows and a vaulted ceiling. Gorgeous kitchen with centre island / breakfast bar, stainless appliances, and corner pantry. Patio doors to a raised deck overlooking the fully fenced and landscaped yard. Main floor has a bedroom and adjacent 4 piece bath. Primary bedroom is above the garage and has a walk-in closet and 4 piece ensuite. Lower level has a generous family room with cozy corner gas fireplace. 2 additional bedrooms and another 4 piece bath. Meticulously maintained yard great for entertaining. Conveniently located with trails to parks and pond. Easy access to Ray Gibbon Drive and Henday.

Built in 2008

Essential Information

MLS® #	E4434143
Price	\$535,000
Bedrooms	4
Bathrooms	3.00
Full Baths	3
Square Footage	1,298
Acres	0.00



Year Built	2008
Type	Single Family
Sub-Type	Detached Single Family
Style	Bi-Level
Status	Active

Community Information

Address	100 Napoleon Crescent
Area	St. Albert
Subdivision	North Ridge
City	St. Albert
County	ALBERTA
Province	AB
Postal Code	T8N 3L6

Amenities

Amenities	Deck, Detectors Smoke, Vaulted Ceiling
Parking Spaces	2
Parking	Double Garage Attached

Interior

Interior Features	ensuite bathroom
Appliances	Dishwasher-Built-In, Dryer, Garage Opener, Humidifier-Power(Furnace), Microwave Hood Fan, Refrigerator, Stove-Electric, Vacuum Systems, Washer, Window Coverings
Heating	Forced Air-1, Natural Gas
Fireplace	Yes
Fireplaces	Corner
Stories	2
Has Basement	Yes
Basement	Full, Finished

Exterior

Exterior	Wood, Brick, Vinyl
Exterior Features	Fenced, Flat Site, Landscaped, Playground Nearby, Schools, Shopping Nearby
Roof	Asphalt Shingles
Construction	Wood, Brick, Vinyl
Foundation	Concrete Perimeter

Additional Information

Date Listed May 2nd, 2025
Days on Market 1
Zoning Zone 24

DATA IS DEEMED RELIABLE BUT IS NOT GUARANTEED ACCURATE BY THE REALTORS® ASSOCIATION OF EDMONTON. COPYRIGHT 2025 BY THE REALTORS® ASSOCIATION OF EDMONTON. ALL RIGHTS RESERVED.Trademarks are owned or controlled by the Canadian Real Estate Association (CREA) and identify real estate professionals who are members of CREA (REALTOR®, REALTORS®) and/or the quality of services they provide (MLS®, Multiple Listing Service®)
Listing information last updated on May 3rd, 2025 at 8:32pm MDT