

Courtesy Of Stephanie Martin-Rawluk Of Exp Realty

# **\$949,000 - 590072 Rge Rd 113 A, Rural Woodlands County**

MLS® #E4435311

**\$949,000**

5 Bedroom, 3.00 Bathroom, 4,001 sqft

Rural on 4.84 Acres

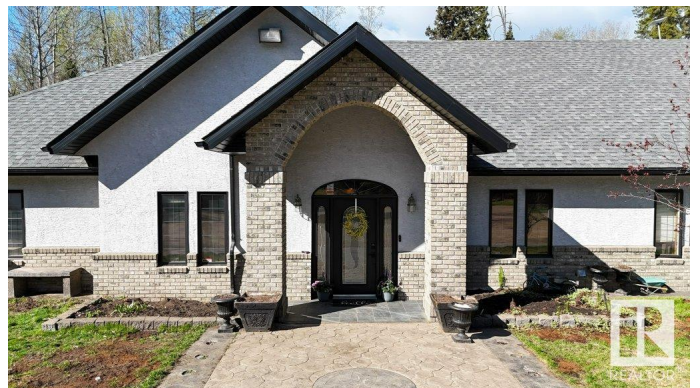
None, Rural Woodlands County, AB

Welcome to this executive, custom built home sitting on almost 5 acres just outside of town. Entirely surrounded by trees, this property could be your new sanctuary. Including all features you could possibly need: An oversized detached garage, a shop with a wood fireplace, gazebo, concrete poured deck, and your very own chipping green in the backyard. This 5 bedroom, 3 bathroom home is equipped with new solar panels, in floor heating, and stainless steel appliances. Almost 4,000 sq ft. of living space ready for you to enjoy. We love the fireplace in the primary suite, and the massive ensuite where you can enjoy the walk-in shower, and corner jetted bathtub. Bask on summer nights on the back deck listening to the birds, enjoy the kitchen that provides tons of space to host your friends and family, or escape a winter evening relaxing by the fire in the living room. We welcome you to your new home, it's ready for you to make great memories in.

Built in 2001

## **Essential Information**

|          |           |
|----------|-----------|
| MLS® #   | E4435311  |
| Price    | \$949,000 |
| Bedrooms | 5         |



|                |                        |
|----------------|------------------------|
| Bathrooms      | 3.00                   |
| Full Baths     | 3                      |
| Square Footage | 4,001                  |
| Acres          | 4.84                   |
| Year Built     | 2001                   |
| Type           | Rural                  |
| Sub-Type       | Detached Single Family |
| Style          | Bungalow               |
| Status         | Active                 |

### Community Information

|             |                        |
|-------------|------------------------|
| Address     | 590072 Rge Rd 113 A    |
| Area        | Rural Woodlands County |
| Subdivision | None                   |
| City        | Rural Woodlands County |
| County      | ALBERTA                |
| Province    | AB                     |
| Postal Code | T7S 1P8                |

### Amenities

|          |  |
|----------|--|
| Features | Closet Organizers, Fire Pit, Gazebo, Hot Tub, No Smoking Home, Parking-Extra, Patio, Workshop, Solar Equipment |
|----------|--|

### Interior

|                   |                                   |
|-------------------|-----------------------------------|
| Interior Features | ensuite bathroom                  |
| Heating           | In Floor Heat System, Natural Gas |
| Stories           | 1                                 |
| Has Basement      | Yes                               |
| Basement          | None, No Basement                 |

### Exterior

|                   |   |
|-------------------|---|
| Exterior          | Wood  |
| Exterior Features | Backs Onto Park/Trees, Landscaped, Private Setting, Treed Lot |
| Construction      | Wood  |
| Foundation        | Concrete Perimeter  |

### Additional Information

|                |               |
|----------------|---------------|
| Date Listed    | May 8th, 2025 |
| Days on Market | 66            |

## Zoning

## Zone 70

DATA IS DEEMED RELIABLE BUT IS NOT GUARANTEED ACCURATE BY THE REALTORS® ASSOCIATION OF EDMONTON. COPYRIGHT 2025 BY THE REALTORS® ASSOCIATION OF EDMONTON. ALL RIGHTS RESERVED. Trademarks are owned or controlled by the Canadian Real Estate Association (CREA) and identify real estate professionals who are members of CREA (REALTOR®, REALTORS®) and/or the quality of services they provide (MLS®, Multiple Listing Service®)

Listing information last updated on July 12th, 2025 at 11:17pm MDT