

\$369,900 - 3906 56 Avenue, Wetaskiwin

MLS® #E4435975

\$369,900

4 Bedroom, 3.50 Bathroom, 1,324 sqft

Single Family on 0.00 Acres

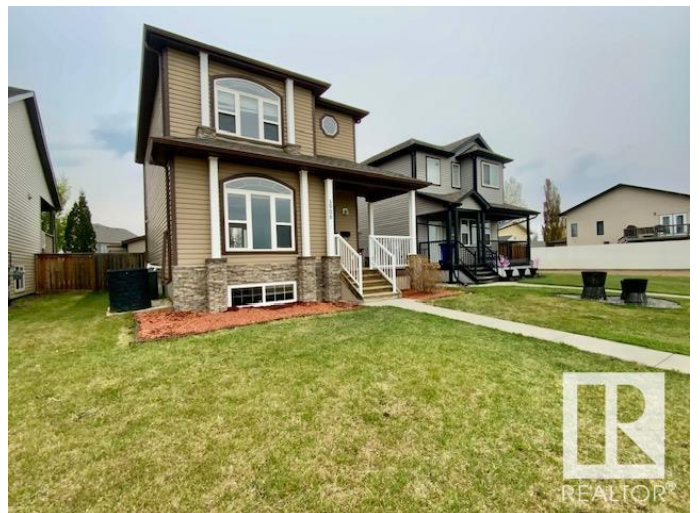
Parkside, Wetaskiwin, AB

Beautiful 2-Storey Family Home in a Fantastic neighbourhood within walking distance to schools, parks & recreation centre! Built in 2011 with a DOUBLE DETACHED GARAGE. Gorgeous open floor plan, perfect for entertaining. AIR-CONDITIONING. You will love the Chef's kitchen w/ QUARTZ COUNTERTOPS, centre island, 4 appliances including a GAS STOVE & tons of soft-close cabinetry. Open dining area is a great size w/ modern light fixtures & patio doors out to your back deck. Upstairs will lead you to 3 bedrooms including the primary room w/ walk-in closet & 3-pc ensuite and 4 pc bath. Downstairs is finished with a SIDE ENTRANCE, huge bedroom, family room, 4-pc bath, laundry and storage room. Backyard is a great space, FULLY FENCED with a large maintenance-free deck, gas bbq hook-up, perfect for summer evening gatherings. A PERFECT PLACE TO CALL HOME WITH QUICK POSSESSION AVAILABLE!

Built in 2011

Essential Information

MLS® #	E4435975
Price	\$369,900
Bedrooms	4
Bathrooms	3.50



Full Baths	3
Half Baths	1
Square Footage	1,324
Acres	0.00
Year Built	2011
Type	Single Family
Sub-Type	Detached Single Family
Style	2 Storey
Status	Active

Community Information

Address	3906 56 Avenue
Area	Wetaskiwin
Subdivision	Parkside
City	Wetaskiwin
County	ALBERTA
Province	AB
Postal Code	T9A 1X6

Amenities

Amenities	Air Conditioner, Deck, Vinyl Windows
Parking	Double Garage Detached, Insulated

Interior

Interior Features	ensuite bathroom
Appliances	Air Conditioning-Central, Dishwasher-Built-In, Dryer, Garage Control, Garage Opener, Microwave Hood Fan, Refrigerator, Storage Shed, Stove-Gas, Washer, Window Coverings, TV Wall Mount
Heating	Forced Air-1, Natural Gas
Stories	3
Has Basement	Yes
Basement	Full, Finished

Exterior

Exterior	Wood, Stone, Vinyl
Exterior Features	Back Lane, Fenced, Golf Nearby, Landscaped, Playground Nearby, Public Swimming Pool, Schools
Roof	Asphalt Shingles
Construction	Wood, Stone, Vinyl

Foundation Concrete Perimeter

School Information

Elementary Norwood
Middle Sacred Heart
High WCHS

Additional Information

Date Listed May 10th, 2025
Days on Market 3
Zoning Zone 80

DATA IS DEEMED RELIABLE BUT IS NOT GUARANTEED ACCURATE BY THE REALTORS® ASSOCIATION OF EDMONTON. COPYRIGHT 2025 BY THE REALTORS® ASSOCIATION OF EDMONTON. ALL RIGHTS RESERVED.Trademarks are owned or controlled by the Canadian Real Estate Association (CREA) and identify real estate professionals who are members of CREA (REALTOR®, REALTORS®) and/or the quality of services they provide (MLS®, Multiple Listing Service®)
Listing information last updated on May 13th, 2025 at 8:32am MDT