

\$392,900 - 111 528 Griesbach Parade Parade, Edmonton

MLS® #E4436176

\$392,900

2 Bedroom, 2.50 Bathroom, 1,128 sqft
Condo / Townhouse on 0.00 Acres

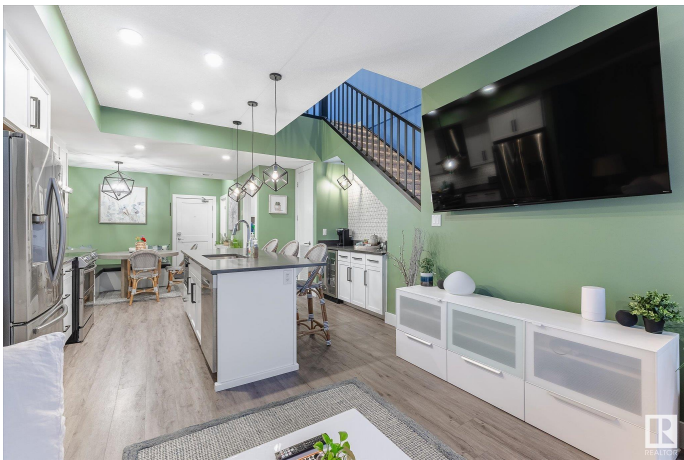
Griesbach, Edmonton, AB

Rare 2-storey condo with private ground-level access in award-winning Griesbach! The Veritas offers luxury condo living with the feel of a townhouse—ideal for professionals seeking elevated style without the upkeep of a house. Enter from the main building or directly from your private patio and energized stall (with Level 1 EV charger). Inside, enjoy 9’™ ceilings, a chef’s™ kitchen with quartz counters, high-end appliances, beverage bar, and spacious living/dining areas. Upstairs: dual primary suites, each with walk-in closets and private ensuites. Smart lighting, in-suite laundry, underground heated parking with storage, and top-tier amenities—gym, guest suites, social room. All in a stunning community surrounded by parks, trails, and historic charm. A perfect fit for those who value design, convenience, and walkability.

Built in 2018

Essential Information

MLS® #	E4436176
Price	\$392,900
Bedrooms	2
Bathrooms	2.50
Full Baths	2
Half Baths	1
Square Footage	1,128



Acres	0.00
Year Built	2018
Type	Condo / Townhouse
Sub-Type	Lowrise Apartment
Style	Multi Level Apartment
Status	Active

Community Information

Address	111 528 Griesbach Parade Parade
Area	Edmonton
Subdivision	Griesbach
City	Edmonton
County	ALBERTA
Province	AB
Postal Code	T5E 6X2

Amenities

Amenities	Air Conditioner, Ceiling 9 ft., Exercise Room, No Animal Home, Parking-Visitor, Secured Parking, Security Door, Social Rooms, Storage-In-Suite, Storage Cage
Parking Spaces	2
Parking	Heated, Stall, Underground, EV Charging Station

Interior

Interior Features	ensuite bathroom
Appliances	Dishwasher-Built-In, Dryer, Hood Fan, Oven-Microwave, Refrigerator, Stove-Electric, Washer, Window Coverings, Wine/Beverage Cooler, See Remarks
Heating	Heat Pump, Natural Gas
# of Stories	4
Stories	2
Has Basement	Yes
Basement	None, No Basement

Exterior

Exterior	Wood, Stone, Vinyl
Exterior Features	Golf Nearby, Lake Access Property, Landscaped, Low Maintenance Landscape, Park/Reserve, Playground Nearby, Public Transportation, Schools, Shopping Nearby
Roof	Asphalt Shingles

Construction	Wood, Stone, Vinyl
Foundation	Concrete Perimeter

School Information

Elementary	Major-General Griesbach
Middle	Major-General Griesbach
High	Queen Elizabeth

Additional Information

Date Listed	May 12th, 2025
Days on Market	21
Zoning	Zone 27
Condo Fee	\$597

DATA IS DEEMED RELIABLE BUT IS NOT GUARANTEED ACCURATE BY THE REALTORS® ASSOCIATION OF EDMONTON. COPYRIGHT 2025 BY THE REALTORS® ASSOCIATION OF EDMONTON. ALL RIGHTS RESERVED. Trademarks are owned or controlled by the Canadian Real Estate Association (CREA) and identify real estate professionals who are members of CREA (REALTOR®, REALTORS®) and/or the quality of services they provide (MLS®, Multiple Listing Service®)

Listing information last updated on June 2nd, 2025 at 5:32pm MDT