

\$214,900 - 5922 172 Street, Edmonton

MLS® #E4436179

\$214,900

3 Bedroom, 1.00 Bathroom, 1,104 sqft
Condo / Townhouse on 0.00 Acres

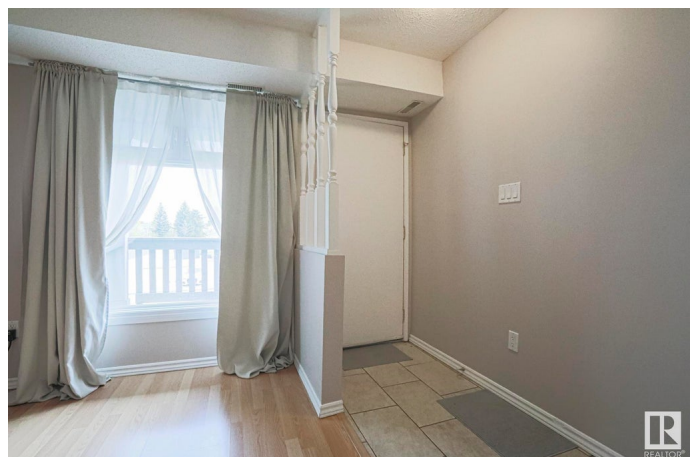
Gariepy, Edmonton, AB

Welcome to this amazing home in the Carriage Lane complex in Gariepy. This lovely 1100 sqft property contains a ton of living space with 3 well sized bedrooms, including the large primary bedroom with walk in closet. The living room and dining room are spacious and open concept, seated beside the kitchen for easy access and serving. The kitchen boasts tons of countertops and oak wood cabinets with lots of space connecting to a walk in pantry for even more storage. All appliances newer and in fantastic shape. Other 2 bedrooms are well lit with a large windows. One also has a walk in closet. Lots of storage space. Beautiful 4pc bath with large soaker tub and large countertop. 1 assigned parking spot right outside the unit for convenient access to parking. Don't wait! This move-in ready property is located near schools, shopping and transportation, and is perfect for first time buyers, families, those looking to downsize, and even investors!

Built in 1978

Essential Information

MLS® #	E4436179
Price	\$214,900
Bedrooms	3
Bathrooms	1.00



Full Baths	1
Square Footage	1,104
Acres	0.00
Year Built	1978
Type	Condo / Townhouse
Sub-Type	Carriage
Style	Bungalow
Status	Active

Community Information

Address	5922 172 Street
Area	Edmonton
Subdivision	Gariepy
City	Edmonton
County	ALBERTA
Province	AB
Postal Code	T6M 1B4

Amenities

Amenities	Detectors Smoke, Storage-In-Suite
Parking	Stall

Interior

Appliances	Air Conditioner-Window, Dishwasher-Built-In, Dryer, Fan-Ceiling, Hood Fan, Refrigerator, Stove-Electric, Washer, Window Coverings
Heating	Forced Air-1, Natural Gas
Fireplace	Yes
Fireplaces	Brick Facing, Corner
Stories	1
Has Basement	Yes
Basement	None, No Basement

Exterior

Exterior	Wood
Exterior Features	Backs Onto Park/Trees, Landscaped, Park/Reserve, Playground Nearby, Private Setting, Public Transportation, Schools, Shopping Nearby
Roof	Asphalt Shingles
Construction	Wood

Foundation Concrete Perimeter

Additional Information

Date Listed May 13th, 2025
Days on Market 35
Zoning Zone 20
Condo Fee \$427

DATA IS DEEMED RELIABLE BUT IS NOT GUARANTEED ACCURATE BY THE REALTORS® ASSOCIATION OF EDMONTON. COPYRIGHT 2025 BY THE REALTORS® ASSOCIATION OF EDMONTON. ALL RIGHTS RESERVED.Trademarks are owned or controlled by the Canadian Real Estate Association (CREA) and identify real estate professionals who are members of CREA (REALTOR®, REALTORS®) and/or the quality of services they provide (MLS®, Multiple Listing Service®)
Listing information last updated on June 17th, 2025 at 2:02am MDT