

\$649,000 - 130 Parkview Drive, Wetaskiwin

MLS® #E4436404

\$649,000

4 Bedroom, 3.50 Bathroom, 2,716 sqft

Single Family on 0.00 Acres

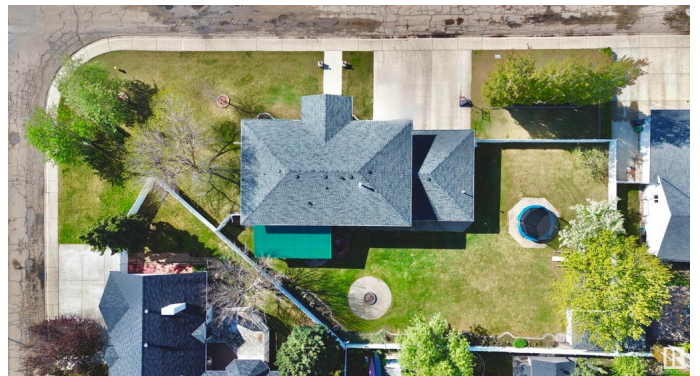
Parkside, Wetaskiwin, AB

This GRAND Executive home must be seen to be appreciated. This home is on a massive .4 acre lot and the home was Custom built with great upgrades! The large chefs kitchen has Corian tops, gas range and a wall oven. No shortage of space leaves your choice of 2 dining rooms and an expansive great room with 17' ceilings! The grand centre staircase leads to a well designed family space with the kids and the primary bedrooms located on either wing of the home. A large functional laundry rounds the central upstairs. There are few options for office/craft rooms, basement has a 4th bedroom, Games area and a TV room with bar and gas fireplace! The basement has a convenient staircase to the Triple Heated garage. Outside is a Private, park-like back yard w/MAINTENANCE FREE vinyl fence built on a concrete curb! Shed even has full wiring and a concrete floor! Too many upgrades to list! 3 furnaces! Central Air! 2019 Roof! Underground Sprinkler! New Fridge! Low Voltage lighting! Covered back Patio!

Built in 1997

Essential Information

MLS® #	E4436404
Price	\$649,000
Bedrooms	4



Bathrooms	3.50
Full Baths	3
Half Baths	1
Square Footage	2,716
Acres	0.00
Year Built	1997
Type	Single Family
Sub-Type	Detached Single Family
Style	2 Storey
Status	Active

Community Information

Address	130 Parkview Drive
Area	Wetaskiwin
Subdivision	Parkside
City	Wetaskiwin
County	ALBERTA
Province	AB
Postal Code	T9A 3J6

Amenities

Amenities	Air Conditioner, Fire Pit, No Smoking Home, Sprinkler Sys-Underground
Parking	Triple Garage Attached

Interior

Interior Features	ensuite bathroom
Appliances	Dishwasher-Built-In, Dryer, Freezer, Garage Control, Garage Opener, Hood Fan, Storage Shed, Stove-Gas, Washer, Window Coverings, Refrigerators-Two
Heating	Forced Air-1, Natural Gas
Fireplace	Yes
Fireplaces	Oak Surround
Stories	3
Has Basement	Yes
Basement	Full, Finished

Exterior

Exterior	Wood, Brick, Vinyl
Exterior Features	Corner Lot, Fenced, Flat Site, Golf Nearby, Landscaped, Low

	Maintenance Landscape
Roof	Asphalt Shingles
Construction	Wood, Brick, Vinyl
Foundation	Concrete Perimeter

Additional Information

Date Listed	May 14th, 2025
Days on Market	11
Zoning	Zone 80

DATA IS DEEMED RELIABLE BUT IS NOT GUARANTEED ACCURATE BY THE REALTORS® ASSOCIATION OF EDMONTON. COPYRIGHT 2025 BY THE REALTORS® ASSOCIATION OF EDMONTON. ALL RIGHTS RESERVED. Trademarks are owned or controlled by the Canadian Real Estate Association (CREA) and identify real estate professionals who are members of CREA (REALTOR®, REALTORS®) and/or the quality of services they provide (MLS®, Multiple Listing Service®)

Listing information last updated on May 25th, 2025 at 3:32am MDT