

# **\$224,888 - 106 2098 Blackmud Creek Drive, Edmonton**

MLS® #E4438344

**\$224,888**

2 Bedroom, 2.00 Bathroom, 1,076 sqft  
Condo / Townhouse on 0.00 Acres

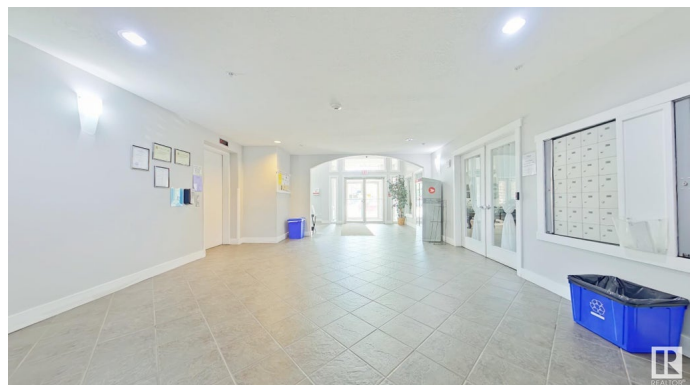
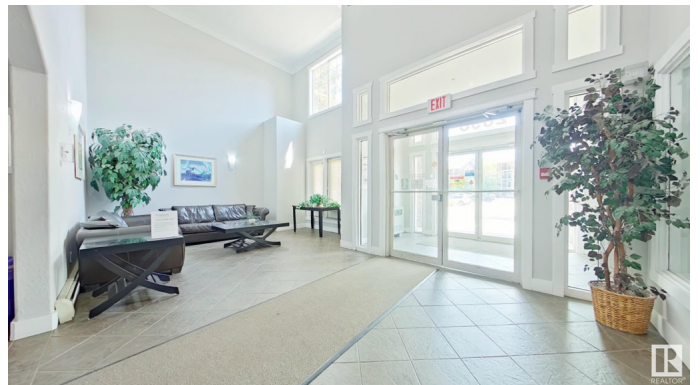
Blackmud Creek, Edmonton, AB

Spacious and well-designed main-floor apartment featuring 2 bedrooms and 2 full bathrooms, ideally located in the community of Blackmud Creek. Enjoy the convenience of having Roberta McAdams School just across the street and a grocery store right around the corner. The generously sized primary bedroom includes a walk-through closet leading to your private 3-piece ensuite. The second bedroom offers great flexibilityâ€”perfect for guests, a home office, or a growing family. Additional features include air conditioning, in-suite laundry, and secure TITLED underground parking with an attached storage unit for added convenience. The building also offers amenities such as a fitness room and billiards room. Excellent opportunity whether you're a first-time buyer, downsizing, or looking for an investment property.

Built in 2004

## **Essential Information**

MLS® #	E4438344
Price	\$224,888
Bedrooms	2
Bathrooms	2.00
Full Baths	2
Square Footage	1,076
Acres	0.00



Year Built	2004
Type	Condo / Townhouse
Sub-Type	Lowrise Apartment
Style	Single Level Apartment
Status	Active

### **Community Information**

Address	106 2098 Blackmud Creek Drive
Area	Edmonton
Subdivision	Blackmud Creek
City	Edmonton
County	ALBERTA
Province	AB
Postal Code	T6W 1T7

### **Amenities**

Amenities	Air Conditioner, Exercise Room, Parking-Visitor, Party Room, See Remarks
Parking Spaces	1
Parking	Underground

### **Interior**

Interior Features	ensuite bathroom
Appliances	Air Conditioning-Central, Dishwasher-Built-In, Dryer, Microwave Hood Fan, Refrigerator, Stove-Electric, Washer
Heating	Forced Air-1, Natural Gas
Fireplace	Yes
Fireplaces	Corner
# of Stories	4
Stories	1
Has Basement	Yes
Basement	None, No Basement

### **Exterior**

Exterior	Wood, Stone, Vinyl
Exterior Features	Playground Nearby, Public Transportation, Schools, Shopping Nearby
Roof	Asphalt Shingles
Construction	Wood, Stone, Vinyl
Foundation	Concrete Perimeter

**Additional Information**

Date Listed	May 21st, 2025
Days on Market	28
Zoning	Zone 55
Condo Fee	\$553

DATA IS DEEMED RELIABLE BUT IS NOT GUARANTEED ACCURATE BY THE REALTORS® ASSOCIATION OF EDMONTON. COPYRIGHT 2025 BY THE REALTORS® ASSOCIATION OF EDMONTON. ALL RIGHTS RESERVED.Trademarks are owned or controlled by the Canadian Real Estate Association (CREA) and identify real estate professionals who are members of CREA (REALTOR®, REALTORS®) and/or the quality of services they provide (MLS®, Multiple Listing Service®)

Listing information last updated on June 18th, 2025 at 1:02am MDT