

Courtesy Of Anna Kreamer Of Real Broker

\$239,900 - N/A, Edmonton

MLS® #E4439739

\$239,900

4 Bedroom, 1.50 Bathroom, 1,130 sqft

Condo / Townhouse on 0.00 Acres

Northmount (Edmonton), Edmonton, AB

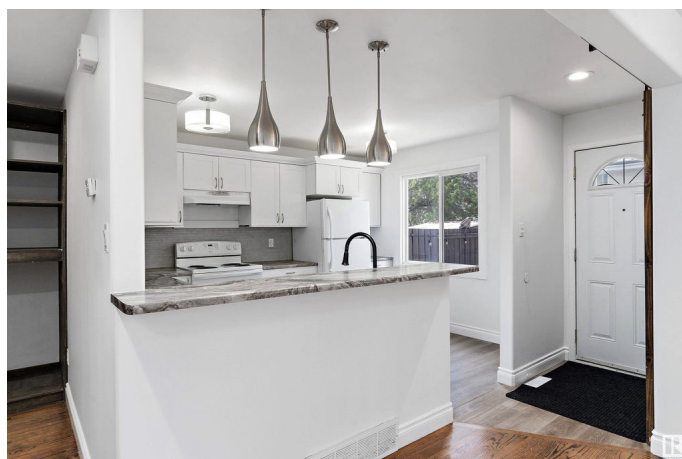
Great opportunity for first time homeowner to own a 3+1 bedroom townhome in vibrant Northmount. Upon entry, you are greeted with a spacious open-concept living/dining with oak hardwood floors. Kitchen has plenty of storage, west face window and a convenient 2pc bath/main floor storage. Upstairs; updated flooring, generous primary, plus 2 bdrm and spacious 4 piece bath. Finished basement features 4th bedroom, large window floods room with sunlight and family/rec room. Laundry/utility/storage Outside, you can enjoy your west face fenced yard with wood deck and storage shed. Room to gather for summer BBQ's! This unit offers one assigned/powerd parking stall, LOW condo fees, and a well managed complex with mature landsacping. Norhthmount has an active community league with an outdoor rink. Convenient location with 3 schools, a wide array of local amenities and family-friendly parks. Shopping is convenient with access to transit and major roadways. Why rent when you can own? Move in ready!

Built in 1969

Essential Information

MLS® # E4439739

Price \$239,900



Bedrooms	4
Bathrooms	1.50
Full Baths	1
Half Baths	1
Square Footage	1,130
Acres	0.00
Year Built	1969
Type	Condo / Townhouse
Sub-Type	Townhouse
Style	2 Storey
Status	Active

Community Information

Address	N/A
Area	Edmonton
Subdivision	Northmount (Edmonton)
City	Edmonton
County	ALBERTA
Province	AB
Postal Code	T5E 5R6

Amenities

Amenities	Deck, No Animal Home, No Smoking Home, Parking-Plug-Ins, Parking-Visitor
Parking	Stall

Interior

Appliances	Dishwasher-Built-In, Dryer, Hood Fan, Refrigerator, Storage Shed, Stove-Electric, Washer
Heating	Forced Air-1, Natural Gas
Stories	3
Has Basement	Yes
Basement	Full, Finished

Exterior

Exterior	Wood, Brick, Stucco
Exterior Features	Fenced, Landscaped, Low Maintenance Landscape, Playground Nearby, Public Transportation, Schools, Shopping Nearby
Roof	Asphalt Shingles

Construction	Wood, Brick, Stucco
Foundation	Concrete Perimeter

School Information

Elementary	Northmount, St Ann, St Phi
Middle	Dickensfield, Cardinal Leg

Additional Information

Date Listed	May 30th, 2025
Days on Market	18
Zoning	Zone 02
Condo Fee	\$300

DATA IS DEEMED RELIABLE BUT IS NOT GUARANTEED ACCURATE BY THE REALTORS® ASSOCIATION OF EDMONTON. COPYRIGHT 2025 BY THE REALTORS® ASSOCIATION OF EDMONTON. ALL RIGHTS RESERVED.Trademarks are owned or controlled by the Canadian Real Estate Association (CREA) and identify real estate professionals who are members of CREA (REALTOR®, REALTORS®) and/or the quality of services they provide (MLS®, Multiple Listing Service®)

Listing information last updated on June 17th, 2025 at 7:02am MDT