

## \$225,000 - 111 182 Haddow Close, Edmonton

MLS® #E4440956

**\$225,000**

2 Bedroom, 2.00 Bathroom, 1,166 sqft

Condo / Townhouse on 0.00 Acres

Haddow, Edmonton, AB

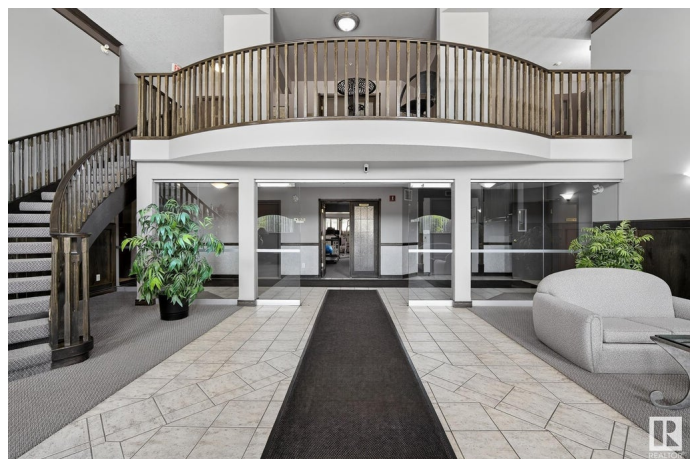
Adult Living in Prestigious Haddow. Welcome to luxury and ease in this beautifully maintained adult-only condo nestled in the heart of Riverbendâ€™one of Edmontonâ€™s most sought-after communities. This spacious 1,165 sq ft ground-floor corner unit offers the perfect blend of comfort, style, and convenience. Boasting 2 generous bedrooms and 2 full bathrooms, this bright and inviting home is flooded with natural light thanks to 9 large windows. The open-concept living space features durable vinyl plank flooring and a crisp white kitchen, offering both style and function. Step outside to your private patioâ€™perfect for morning coffee or summer evenings. The king-sized primary bedroom includes a full ensuite and walk-in closet, while the second bedroom is ideal for guests or a home office. You'll also appreciate the in-suite laundry and ample storage throughout. This well-managed building offers fantastic amenities including an exercise room, guest suite, and meeting space. With easy access to walking trails

Built in 2001

### Essential Information

MLS® # E4440956

Price \$225,000



Bedrooms	2
Bathrooms	2.00
Full Baths	2
Square Footage	1,166
Acres	0.00
Year Built	2001
Type	Condo / Townhouse
Sub-Type	Lowrise Apartment
Style	Single Level Apartment
Status	Active

### **Community Information**

Address	111 182 Haddow Close
Area	Edmonton
Subdivision	Haddow
City	Edmonton
County	ALBERTA
Province	AB
Postal Code	T6R 2V1

### **Amenities**

Amenities	Exercise Room, Guest Suite
Parking	Stall

### **Interior**

Interior Features	ensuite bathroom
Appliances	Dishwasher-Built-In, Dryer, Refrigerator, Stove-Electric, Washer
Heating	Fan Coil, Natural Gas
# of Stories	5
Stories	1
Has Basement	Yes
Basement	None, No Basement

### **Exterior**

Exterior	Wood, Stucco
Exterior Features	Flat Site, Landscaped
Roof	Asphalt Shingles
Construction	Wood, Stucco
Foundation	Concrete Perimeter

**Additional Information**

Date Listed	June 6th, 2025
Days on Market	11
Zoning	Zone 14
Condo Fee	\$626

DATA IS DEEMED RELIABLE BUT IS NOT GUARANTEED ACCURATE BY THE REALTORS® ASSOCIATION OF EDMONTON. COPYRIGHT 2025 BY THE REALTORS® ASSOCIATION OF EDMONTON. ALL RIGHTS RESERVED.Trademarks are owned or controlled by the Canadian Real Estate Association (CREA) and identify real estate professionals who are members of CREA (REALTOR®, REALTORS®) and/or the quality of services they provide (MLS®, Multiple Listing Service®)

Listing information last updated on June 17th, 2025 at 1:32am MDT