

## \$549,000 - 324 32 Avenue, Edmonton

MLS® #E4441518

**\$549,000**

4 Bedroom, 3.00 Bathroom, 1,787 sqft

Single Family on 0.00 Acres

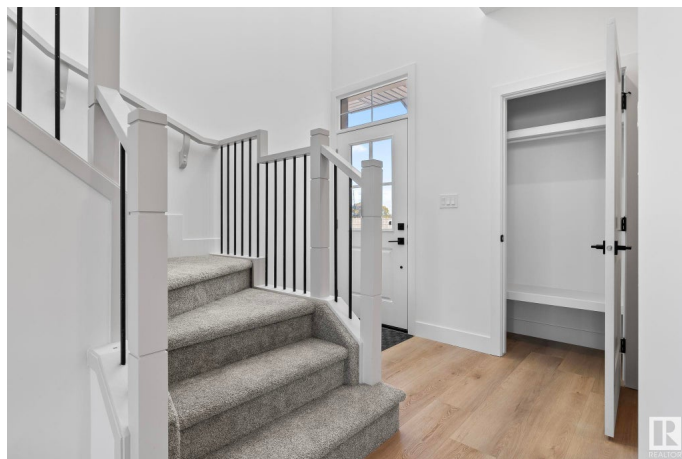
Maple Crest, Edmonton, AB

Completing Fall 2025! Welcome to modern luxury in this brand-new 1700 sqft 4-bedroom, 3 full bathroom half duplex. The main floor features an open to below entry, a full sized bedroom, full bathroom, along with a mudroom with a built in bench and coat hangers. Upgraded spindle railings open the home up along with numerous large windows. The sleekly built kitchen is complete with a 6-foot island, gloss cabinets, and quartz countertops. Complimented with upgraded lighting and all matte black fixtures. This open-concept design flows seamlessly into the spacious living room along with dining nook. A custom millwork feature wall with a mounted fireplace for entertaining. Other upgrades include, glass shower enclosures, and stylish 12" x 24" tiled bathrooms. Upstairs a large bonus living area, laundry room for convenience, and 3 additional bedrooms including the master ensuite that features dual sinks. The separate entrance to the basement offers flexibility and an option to create a source of rental income.

Built in 2025

### Essential Information

|          |           |
|----------|-----------|
| MLS® #   | E4441518  |
| Price    | \$549,000 |
| Bedrooms | 4         |



|                |               |
|----------------|---------------|
| Bathrooms      | 3.00          |
| Full Baths     | 3             |
| Square Footage | 1,787         |
| Acres          | 0.00          |
| Year Built     | 2025          |
| Type           | Single Family |
| Sub-Type       | Half Duplex   |
| Style          | 2 Storey      |
| Status         | Active        |

### Community Information

|             |               |
|-------------|---------------|
| Address     | 324 32 Avenue |
| Area        | Edmonton      |
| Subdivision | Maple Crest   |
| City        | Edmonton      |
| County      | ALBERTA       |
| Province    | AB            |
| Postal Code | T6T 2K2       |

### Amenities

|           |   |
|-----------|---|
| Amenities | Ceiling 9 ft., Closet Organizers, Detectors Smoke, Hot Water Tankless, HRV System, 9 ft. Basement Ceiling |
| Parking   | Double Garage Attached  |

### Interior

|                   |                           |
|-------------------|---------------------------|
| Interior Features | ensuite bathroom          |
| Appliances        | Garage Opener             |
| Heating           | Forced Air-1, Natural Gas |
| Fireplace         | Yes                       |
| Fireplaces        | Wall Mount                |
| Stories           | 2                         |
| Has Basement      | Yes                       |
| Basement          | Full, Unfinished          |

### Exterior

|                   |  |
|-------------------|--|
| Exterior          | Wood, Brick, Composition, Vinyl  |
| Exterior Features | Airport Nearby, Park/Reserve, Playground Nearby, Public Transportation, Schools, Shopping Nearby |
| Roof              | Asphalt Shingles   |

|              |                                 |
|--------------|---------------------------------|
| Construction | Wood, Brick, Composition, Vinyl |
| Foundation   | Concrete Perimeter              |

**Additional Information**

|                |                 |
|----------------|-----------------|
| Date Listed    | June 10th, 2025 |
| Days on Market | 14              |
| Zoning         | Zone 30         |

DATA IS DEEMED RELIABLE BUT IS NOT GUARANTEED ACCURATE BY THE REALTORS® ASSOCIATION OF EDMONTON. COPYRIGHT 2025 BY THE REALTORS® ASSOCIATION OF EDMONTON. ALL RIGHTS RESERVED.Trademarks are owned or controlled by the Canadian Real Estate Association (CREA) and identify real estate professionals who are members of CREA (REALTOR®, REALTORS®) and/or the quality of services they provide (MLS®, Multiple Listing Service®)

Listing information last updated on June 24th, 2025 at 9:02pm MDT