

\$375,000 - 23 5873 Mullen Place, Edmonton

MLS® #E4441623

\$375,000

2 Bedroom, 3.00 Bathroom, 1,597 sqft

Condo / Townhouse on 0.00 Acres

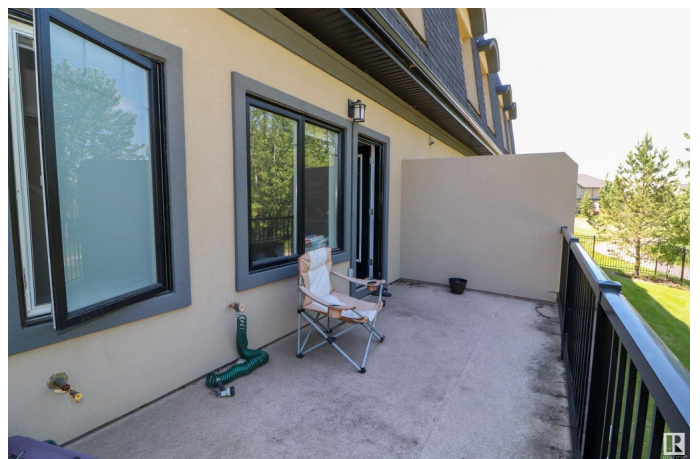
MacTaggart, Edmonton, AB

RAVINE BACKING 2 Bed 4 Bath Townhome w/ Double Attached Garage! This FULLY FINISHED home has an open concept main floor with huge SOUTH FACING windows & plenty of space for entertaining. The upgraded kitchen features a large eating bar, stainless appliances, a corner pantry & direct access to the spacious rear deck that overlooks the ravine & trees. Upstairs, the primary suite is huge w/ a walk in closet & ensuite w/ separate shower & soaker tub. Also upstairs is another large bedroom, laundry room & the main bath. The fully finished basement has a large family room/flex space & half bath. Youâ€™ll also find direct access to the covered walkout deck plus access to the double attached garage. This location is PRIME w/ walking trails at your doorstep + minutes from shopping, restaurants & public transit. Well managed complex with great neighbours!

Built in 2012

Essential Information

MLS® #	E4441623
Price	\$375,000
Bedrooms	2
Bathrooms	3.00
Full Baths	2
Half Baths	2



Square Footage	1,597
Acres	0.00
Year Built	2012
Type	Condo / Townhouse
Sub-Type	Townhouse
Style	2 Storey
Status	Active

Community Information

Address	23 5873 Mullen Place
Area	Edmonton
Subdivision	MacTaggart
City	Edmonton
County	ALBERTA
Province	AB
Postal Code	T6R 0T5

Amenities

Amenities	Ceiling 9 ft., Deck, Parking-Extra, Storage-In-Suite, Walkout Basement
Parking	Double Garage Attached

Interior

Interior Features	ensuite bathroom
Appliances	Dishwasher-Built-In, Dryer, Garage Control, Garage Opener, Microwave Hood Fan, Refrigerator, Stove-Gas, Washer, Window Coverings
Heating	Forced Air-1, Natural Gas
Stories	3
Has Basement	Yes
Basement	Full, Finished

Exterior

Exterior	Wood, Stucco
Exterior Features	Backs Onto Park/Trees, Fenced, Golf Nearby, Landscaped, Picnic Area, Playground Nearby, Private Setting, Public Transportation, Ravine View, Schools, Shopping Nearby
Roof	Asphalt Shingles
Construction	Wood, Stucco
Foundation	Concrete Perimeter

Additional Information

Date Listed	June 10th, 2025
Days on Market	68
Zoning	Zone 14
Condo Fee	\$480

DATA IS DEEMED RELIABLE BUT IS NOT GUARANTEED ACCURATE BY THE REALTORS® ASSOCIATION OF EDMONTON. COPYRIGHT 2025 BY THE REALTORS® ASSOCIATION OF EDMONTON. ALL RIGHTS RESERVED. Trademarks are owned or controlled by the Canadian Real Estate Association (CREA) and identify real estate professionals who are members of CREA (REALTOR®, REALTORS®) and/or the quality of services they provide (MLS®, Multiple Listing Service®)

Listing information last updated on August 17th, 2025 at 2:47pm MDT