

\$524,900 - 54310 Rge Road 24, Rural Lac Ste. Anne County

MLS® #E4441730

\$524,900

5 Bedroom, 2.50 Bathroom, 1,232 sqft
Rural on 4.99 Acres

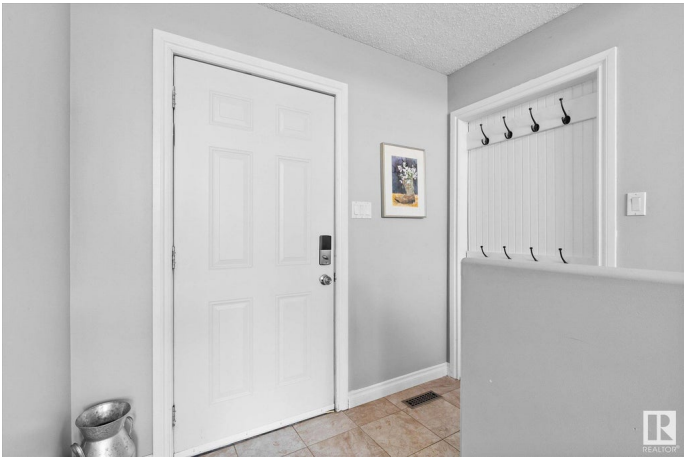
None, Rural Lac Ste. Anne County, AB

Welcome to this beautifully maintained 5-bedroom bungalow nestled on 4.99 acres of serene countryside. Designed for comfort and functionality, this home features a stunning main living area with soaring ceilings that create a bright and open atmosphere. The spacious kitchen and dining areas are perfect for entertaining, while the recently updated ensuite adds a touch of luxury to the primary bedroom. Downstairs, youâ€™ll find the added comfort of in-floor heating throughout the fully developed basementâ€”so ideal for cozy winters.

Built in 2007

Essential Information

MLS® #	E4441730
Price	\$524,900
Bedrooms	5
Bathrooms	2.50
Full Baths	2
Half Baths	1
Square Footage	1,232
Acres	4.99
Year Built	2007
Type	Rural



Sub-Type	Detached Single Family
Style	Bungalow
Status	Active

Community Information

Address	54310 Rge Road 24
Area	Rural Lac Ste. Anne County
Subdivision	None
City	Rural Lac Ste. Anne County
County	ALBERTA
Province	AB
Postal Code	T0E 1V0

Amenities

Features	See Remarks
----------	-------------

Interior

Interior Features	ensuite bathroom
Heating	Forced Air-1, In Floor Heat System, Natural Gas, Water
Stories	2
Has Basement	Yes
Basement	Full, Finished

Exterior

Exterior	Wood
Exterior Features	See Remarks
Construction	Wood
Foundation	Concrete Perimeter

Additional Information

Date Listed	June 11th, 2025
Days on Market	6
Zoning	Zone 70

DATA IS DEEMED RELIABLE BUT IS NOT GUARANTEED ACCURATE BY THE REALTORS® ASSOCIATION OF EDMONTON. COPYRIGHT 2025 BY THE REALTORS® ASSOCIATION OF EDMONTON. ALL RIGHTS RESERVED. Trademarks are owned or controlled by the Canadian Real Estate Association (CREA) and identify real estate professionals who are members of CREA (REALTOR®, REALTORS®) and/or the quality of services they provide (MLS®, Multiple Listing Service®)

Listing information last updated on June 16th, 2025 at 9:17pm MDT