

\$749,900 - 26114 Twp Road 490, Rural Leduc County

MLS® #E4442355

\$749,900

1 Bedroom, 1.00 Bathroom, 1,003 sqft

Rural on 12.00 Acres

Michigan Centre, Rural Leduc County, AB

Set on 12 private acres backing onto open farmland in Michigan Center (Leduc County), this one-of-a-kind property offers peace, privacy, and serious potential. The 1.5-storey home features 1,003 sq ft with 1 bedroom, a large open loft, full bathroom, main floor laundry, updated kitchen (approx. 10 yrs ago), new roof, Hardie board siding, vinyl windows, a huge front patio, and a back patio currently being finished. The loft is a flexible space—ideal as a kids’™ bedroom, shared room, guest space, or future primary suite. The 40’™x60’™ heated shop is fully powered with 220V and air lines throughout—perfect for trades, storage, or your dream workspace. Two single garages (one used as a workshop), a utility shed, chicken coop, and two RV parking stalls all have power and hookups. There’s™ even a fire pit area for relaxing under big prairie skies. Located just minutes to Leduc, Hwy 2, and Edmonton International Airport, this acreage is ready for your next chapter.

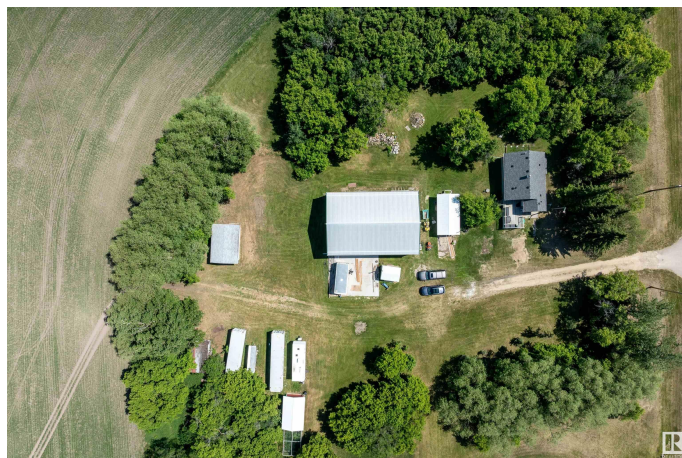
Built in 1924

Essential Information

MLS® # E4442355

Price \$749,900

Bedrooms 1



Bathrooms	1.00
Full Baths	1
Square Footage	1,003
Acres	12.00
Year Built	1924
Type	Rural
Sub-Type	Detached Single Family
Style	1 and Half Storey
Status	Active

Community Information

Address	26114 Twp Road 490
Area	Rural Leduc County
Subdivision	Michigan Centre
City	Rural Leduc County
County	ALBERTA
Province	AB
Postal Code	T4X 2E9

Amenities

Features	Closet Organizers, Deck, Fire Pit, Front Porch, R.V. Storage
Parking Spaces	8

Interior

Heating	Forced Air-1, Natural Gas
Stories	2
Has Basement	Yes
Basement	Full, Unfinished

Exterior

Exterior	Wood
Exterior Features	Flat Site, Fruit Trees/Shrubs, No Back Lane, Shopping Nearby, Treed Lot, Vegetable Garden
Construction	Wood
Foundation	Concrete Perimeter

Additional Information

Date Listed	June 13th, 2025
Days on Market	7

Zoning

Zone 90

DATA IS DEEMED RELIABLE BUT IS NOT GUARANTEED ACCURATE BY THE REALTORS® ASSOCIATION OF EDMONTON. COPYRIGHT 2025 BY THE REALTORS® ASSOCIATION OF EDMONTON. ALL RIGHTS RESERVED. Trademarks are owned or controlled by the Canadian Real Estate Association (CREA) and identify real estate professionals who are members of CREA (REALTOR®, REALTORS®) and/or the quality of services they provide (MLS®, Multiple Listing Service®)

Listing information last updated on June 20th, 2025 at 10:32am MDT