

\$129,900 - 21, 53522 Rr280, Rural Parkland County

MLS® #E4442382

\$129,900

0 Bedroom, 0.00 Bathroom,
Rural on 3.00 Acres

Hacienda Estates (Parkland), Rural Parkland
County, AB

3 acre lot in Hacienda Estates - An ideal spot to build your dream home! Just minutes from Spruce Grove this mostly treed parcel offers a beautiful natural setting with plenty of privacy. Enjoy peaceful country living with all the amenities of the city just a short drive away. Excellent price for this much land!

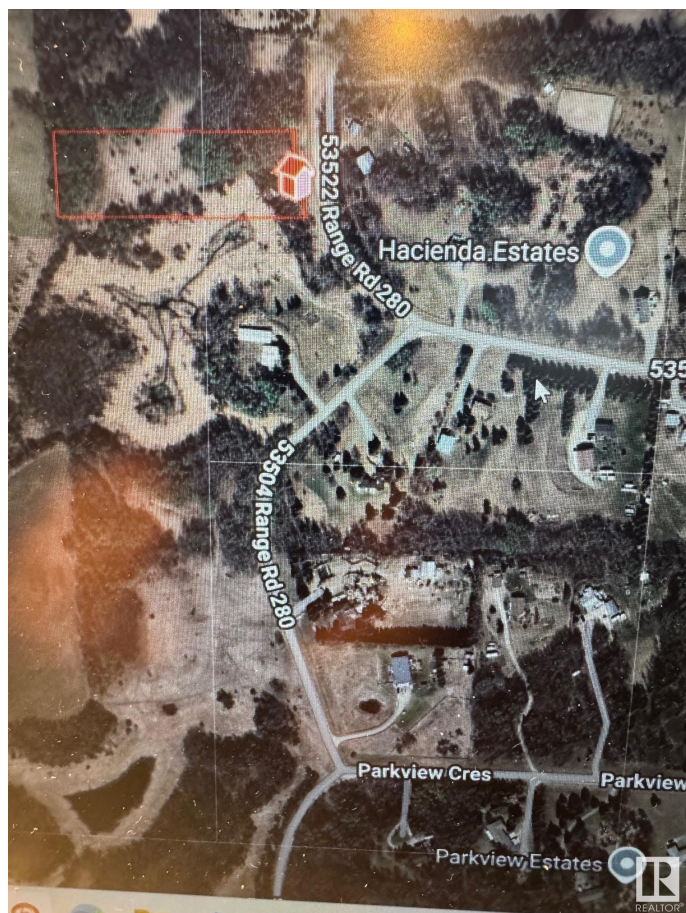
Essential Information

MLS® #	E4442382
Price	\$129,900
Bathrooms	0.00
Acres	3.00
Type	Rural
Sub-Type	Vacant Lot/Land
Status	Active

Community Information

Address	21, 53522 Rr280
Area	Rural Parkland County
Subdivision	Hacienda Estates (Parkland)
City	Rural Parkland County
County	ALBERTA
Province	AB
Postal Code	T7X 3V6

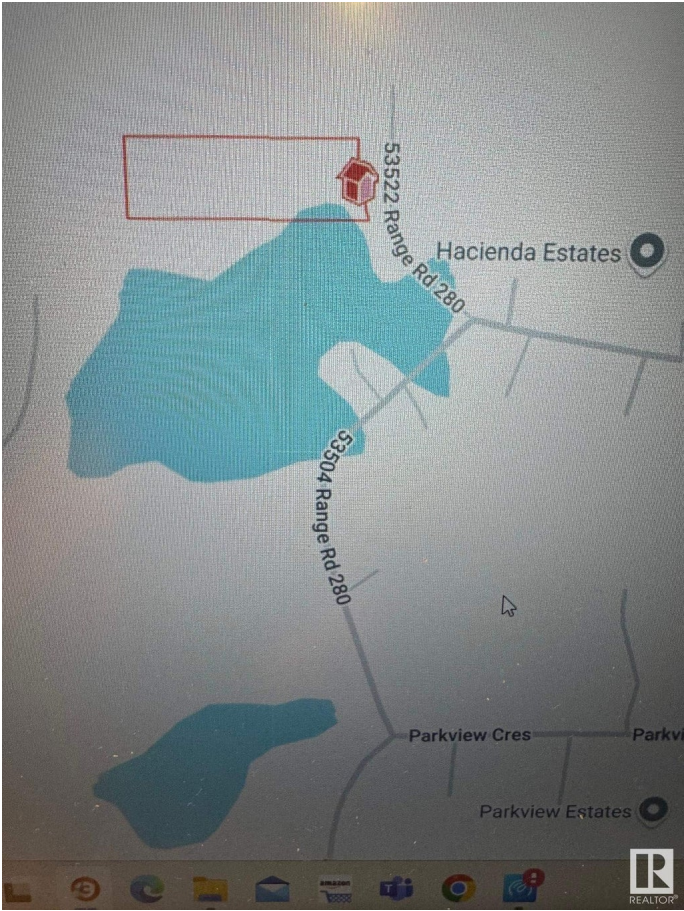
Exterior



Exterior Features Backs Onto Park/Trees, Envi

Additional Information

Date Listed	June 13th, 2025
Days on Market	4
Zoning	Zone 70



DATA IS DEEMED RELIABLE BUT IS NOT GUARANTEED ACCURATE BY THE REALTORS® ASSOCIATION OF EDMONTON. COPYRIGHT 2025 BY THE REALTORS® ASSOCIATION OF EDMONTON. ALL RIGHTS RESERVED. Trademarks are owned or controlled by the Canadian Real Estate Association (CREA) and identify real estate professionals who are members of CREA (REALTOR®, REALTORS®) and/or the quality of services they provide (MLS®, Multiple Listing Service®)

Listing information last updated on June 16th, 2025 at 10:47pm MDT