

\$158,500 - 311 13710 150 Avenue, Edmonton

MLS® #E4443164

\$158,500

1 Bedroom, 1.00 Bathroom, 650 sqft

Condo / Townhouse on 0.00 Acres

Cumberland, Edmonton, AB

Stylish, Upgraded 1-Bedroom Condo with East-Facing Balcony & Underground Parking! Welcome to this bright & beautifully upgraded one-bedroom condo, perfectly positioned on the east side to capture stunning morning light. This move-in-ready unit features a spacious open layout, modern finishes throughout & a private balcony—ideal for enjoying your coffee or relaxing outdoors. The kitchen has been tastefully updated with contemporary cabinetry and sleek countertops, while the living area offers a comfortable, sunlit space to unwind or entertain. The living plant wall brings allows for natural beauty. The generously sized bedroom provides ample closet space & the stylish bathroom complements the modern design. Enjoy the convenience of in-suite laundry, heated underground parking & added peace of mind in a well-maintained, secure building. Whether you™re a first-time buyer, downsizer, or investor, this condo offers excellent value in a prime location. The property offers a gym and amenities room.

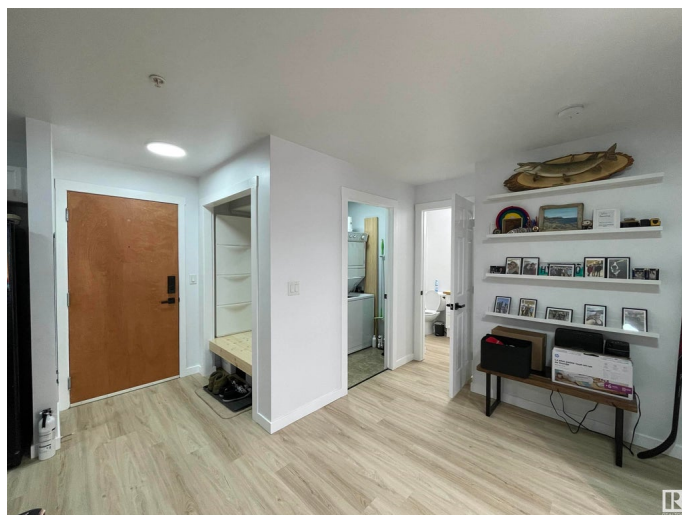
Built in 2006

Essential Information

MLS® # E4443164

Price \$158,500

Bedrooms 1



Bathrooms	1.00
Full Baths	1
Square Footage	650
Acres	0.00
Year Built	2006
Type	Condo / Townhouse
Sub-Type	Apartment High Rise
Style	Single Level Apartment
Status	Active

Community Information

Address	311 13710 150 Avenue
Area	Edmonton
Subdivision	Cumberland
City	Edmonton
County	ALBERTA
Province	AB
Postal Code	T6V 0B2

Amenities

Amenities	Exercise Room, No Smoking Home, Parking-Visitor, Party Room, Sprinkler System-Fire
Parking	Heated, Parkade, Underground

Interior

Appliances	Dishwasher-Built-In, Dryer, Microwave Hood Fan, Refrigerator, Stove-Electric, Washer
Heating	Baseboard, Hot Water, Natural Gas
# of Stories	4
Stories	1
Has Basement	Yes
Basement	None, No Basement

Exterior

Exterior	Wood, Vinyl
Exterior Features	Schools, Shopping Nearby
Roof	Asphalt Shingles
Construction	Wood, Vinyl
Foundation	Concrete Perimeter

Additional Information

Date Listed	June 19th, 2025
Days on Market	15
Zoning	Zone 27
Condo Fee	\$477

DATA IS DEEMED RELIABLE BUT IS NOT GUARANTEED ACCURATE BY THE REALTORS® ASSOCIATION OF EDMONTON. COPYRIGHT 2025 BY THE REALTORS® ASSOCIATION OF EDMONTON. ALL RIGHTS RESERVED.Trademarks are owned or controlled by the Canadian Real Estate Association (CREA) and identify real estate professionals who are members of CREA (REALTOR®, REALTORS®) and/or the quality of services they provide (MLS®, Multiple Listing Service®)

Listing information last updated on July 3rd, 2025 at 11:17pm MDT