

# \$559,000 - 289 Foxboro Crescent, Sherwood Park

MLS® #E4449445

**\$559,000**

3 Bedroom, 2.50 Bathroom, 1,751 sqft

Single Family on 0.00 Acres

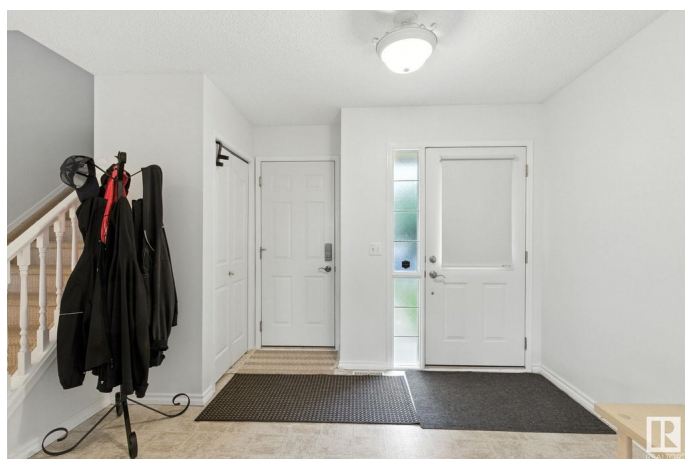
Foxboro, Sherwood Park, AB

This Foxboro 2-storey is packed with space, comfort, and natural light. Step inside to an open layout where the kitchen, dining, and living areas connect beautifully—creating an inviting space for both entertaining and everyday life. A handy half bath completes the main floor. Upstairs, you’ll find a large bonus room, two generously sized spare bedrooms, a full 4-piece bathroom, and a private primary suite featuring its own ensuite and walk-in closet. The basement is open and ready for your finishing ideas, with a brand-new washer and dryer already installed. Outdoors, enjoy a private yard with a big deck and shed, perfect for summer relaxation. Shingles were replaced less than 5 years ago, offering added peace of mind. This home is ideally situated close to schools, parks, trails, and all the amenities Sherwood Park has to offer, making it a perfect fit for families looking for space and convenience.

Built in 2003

## Essential Information

MLS® #	E4449445
Price	\$559,000
Bedrooms	3
Bathrooms	2.50
Full Baths	2



Half Baths	1
Square Footage	1,751
Acres	0.00
Year Built	2003
Type	Single Family
Sub-Type	Detached Single Family
Style	2 Storey
Status	Active

### **Community Information**

Address	289 Foxboro Crescent
Area	Sherwood Park
Subdivision	Foxboro
City	Sherwood Park
County	ALBERTA
Province	AB
Postal Code	T8A 6M4

### **Amenities**

Amenities	Air Conditioner, Deck, Hot Water Natural Gas, Insulation-Upgraded, No Smoking Home
Parking	Double Garage Attached

### **Interior**

Interior Features	ensuite bathroom
Appliances	Air Conditioning-Central, Dishwasher-Built-In, Dryer, Refrigerator, Storage Shed, Stove-Electric, Washer, Window Coverings
Heating	Forced Air-1, Natural Gas
Stories	2
Has Basement	Yes
Basement	Full, Unfinished

### **Exterior**

Exterior	Wood, Vinyl
Exterior Features	Fenced, Landscaped, Schools
Roof	Asphalt Shingles
Construction	Wood, Vinyl
Foundation	Concrete Perimeter

### **Additional Information**

Date Listed July 24th, 2025

Days on Market 10

Zoning Zone 25

DATA IS DEEMED RELIABLE BUT IS NOT GUARANTEED ACCURATE BY THE REALTORS® ASSOCIATION OF EDMONTON. COPYRIGHT 2025 BY THE REALTORS® ASSOCIATION OF EDMONTON. ALL RIGHTS RESERVED. Trademarks are owned or controlled by the Canadian Real Estate Association (CREA) and identify real estate professionals who are members of CREA (REALTOR®, REALTORS®) and/or the quality of services they provide (MLS®, Multiple Listing Service®)

Listing information last updated on August 3rd, 2025 at 8:47pm MDT