

\$325,000 - 213 1406 Hodgson Way, Edmonton

MLS® #E4461938

\$325,000

2 Bedroom, 2.00 Bathroom, 1,113 sqft

Condo / Townhouse on 0.00 Acres

Hodgson, Edmonton, AB

Welcome to Chateaux at Whitemud Ridge located in Edmonton's prestigious SW community of Hodgson. This 2 bedroom, 2 bathroom condo comes with 9' ceiling, 1 titled underground parking stall and a storage cage. This building has an European flare and the courtyard is nestled in the heart of the grounds and a fountain can be enjoyed. The large balcony can be accessed from both the master bedroom or living room doors, and is complete with a gas hook-up. Offering in-suite laundry, quality appliances, granite countertops, and high-end cabinets. The living room is large and open to the deck, dinette and kitchen. This quiet adult building has an age restriction of 21 years old and up, and is wonderfully equipped with amenities including gym, swirl pool, steam room, sauna, party room with barbecue area, media room, and theatre. Walking distance to ravine trails, and easy driving access to the Anthony Henday, Whitemud Drive, and the airport. Enjoy the luxury and comfort of maintenance-free living.

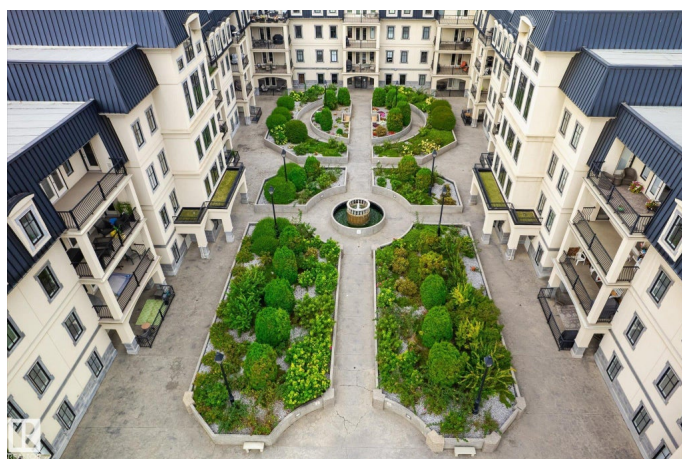
Built in 2004

Essential Information

MLS® # E4461938

Price \$325,000

Bedrooms 2



Bathrooms	2.00
Full Baths	2
Square Footage	1,113
Acres	0.00
Year Built	2004
Type	Condo / Townhouse
Sub-Type	Lowrise Apartment
Style	Single Level Apartment
Status	Active

Community Information

Address	213 1406 Hodgson Way
Area	Edmonton
Subdivision	Hodgson
City	Edmonton
County	ALBERTA
Province	AB
Postal Code	T6R 3N1

Amenities

Amenities	Ceiling 9 ft., Closet Organizers, Deck, Detectors Smoke, Exercise Room, No Animal Home, No Smoking Home, Parking-Visitor, Party Room, Sauna; Swirlpool; Steam, Security Door
Parking Spaces	1
Parking	Heated, Underground

Interior

Interior Features	ensuite bathroom
Appliances	Dishwasher-Built-In, Dryer, Garage Opener, Microwave Hood Fan, Refrigerator, Stove-Electric, Washer
Heating	Forced Air-1, Natural Gas
# of Stories	4
Stories	1
Has Basement	Yes
Basement	None, No Basement

Exterior

Exterior	Wood, Stucco
Exterior Features	Low Maintenance Landscape, No Through Road, Public Swimming Pool,

	Public Transportation, Schools, Shopping Nearby
Roof	Tar & Gravel
Construction	Wood, Stucco
Foundation	Concrete Perimeter

Additional Information

Date Listed	October 13th, 2025
Days on Market	1
Zoning	Zone 14
Condo Fee	\$621

DATA IS DEEMED RELIABLE BUT IS NOT GUARANTEED ACCURATE BY THE REALTORS® ASSOCIATION OF EDMONTON. COPYRIGHT 2025 BY THE REALTORS® ASSOCIATION OF EDMONTON. ALL RIGHTS RESERVED. Trademarks are owned or controlled by the Canadian Real Estate Association (CREA) and identify real estate professionals who are members of CREA (REALTOR®, REALTORS®) and/or the quality of services they provide (MLS®, Multiple Listing Service®)

Listing information last updated on October 14th, 2025 at 4:47pm MDT