

## **\$699,900 - 569 Stewart Crescent, Edmonton**

---

MLS® #E4462915

### **\$699,900**

5 Bedroom, 3.50 Bathroom, 2,441 sqft

Single Family on 0.00 Acres

Summerside, Edmonton, AB

Gorgeous 2,441 sq ft estate home in Lake Summerside with private year-round access to the lake, beach club, tennis, paddle boarding, fishing, mini golf & more. Backing onto a peaceful pond and walking trails this home blends comfort & craftsmanship. The main floor offers a linear fireplace, home office & spacious living area. Upstairs features 3 bedrooms, a bonus room & a primary suite with spa-like ensuite, tiled shower, jacuzzi tub & walk-in closet. The walkout basement, overlooking the pond, has 2 bedrooms, 1 bathroom, living room and a full kitchen as well as separate laundry. Currently there are tenants in the basement. Landscaped yard with mature trees. A two car insulated garage helps with the chilly winters.



Built in 2006

### **Essential Information**

MLS® #	E4462915
Price	\$699,900
Bedrooms	5
Bathrooms	3.50
Full Baths	3
Half Baths	1
Square Footage	2,441
Acres	0.00

Year Built	2006
Type	Single Family
Sub-Type	Detached Single Family
Style	2 Storey
Status	Active

### **Community Information**

Address	569 Stewart Crescent
Area	Edmonton
Subdivision	Summerside
City	Edmonton
County	ALBERTA
Province	AB
Postal Code	T6X 1B6

### **Amenities**

Amenities	Ceiling 10 ft., Lake Privileges, Natural Gas BBQ Hookup
Parking	Double Garage Attached
Is Waterfront	Yes

### **Interior**

Interior Features	ensuite bathroom
Appliances	Fan-Ceiling, Garage Control, Garage Opener, Microwave Hood Fan, Stacked Washer/Dryer, Stove-Electric, Washer, Window Coverings, Dryer-Two, Refrigerators-Two, Stoves-Two, Washers-Two, Dishwasher-Two, Microwave Hood Fan-Two, Curtains and Blinds
Heating	Forced Air-1, Natural Gas
Stories	3
Has Suite	Yes
Has Basement	Yes
Basement	Full, Finished

### **Exterior**

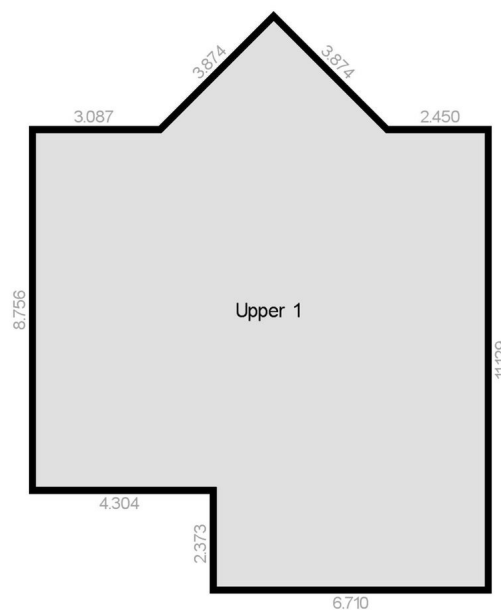
Exterior	Wood, Vinyl
Exterior Features	Backs Onto Lake, Backs Onto Park/Trees, Beach Access, Lake Access Property, Landscaped, Playground Nearby, Private Fishing, Schools, Shopping Nearby
Roof	Asphalt Shingles
Construction	Wood, Vinyl
Foundation	Concrete Perimeter

## Additional Information

Date Listed	October 21st, 2025
Days on Market	10
Zoning	Zone 53
HOA Fees	450
HOA Fees Freq.	Annually

### SUPPORTING PLANS

Upper 1



DATA IS DEEMED RELIABLE BUT IS NOT GUARANTEED ACCURATE BY THE REALTORS® ASSOCIATION OF EDMONTON. COPYRIGHT 2025 BY THE REALTORS® ASSOCIATION OF EDMONTON. ALL RIGHTS RESERVED. Trademarks are owned or controlled by the Canadian Real Estate Association (CREA) and identify real estate professionals who are members of CREA (REALTOR®, REALTORS®) and/or the quality of services they provide (MLS®, Multiple Listing Service®)

Listing information last updated on October 31st, 2025 at 2:02pm MDT